

RNAV (GPS) RWY 21

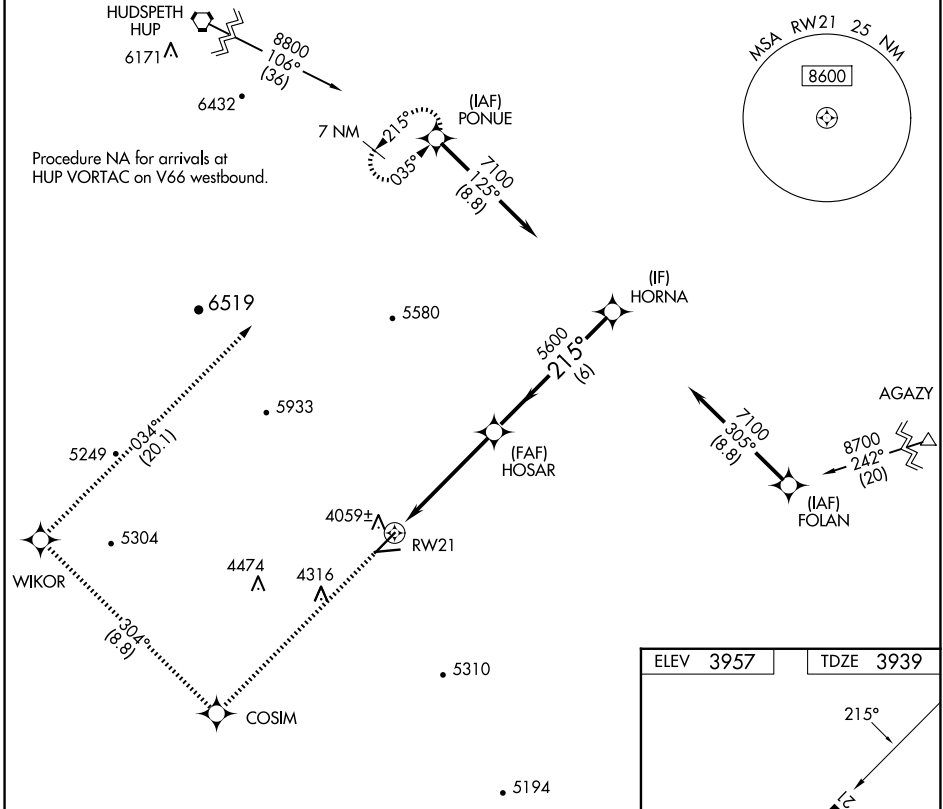
CULBERSON COUNTY (VHN)

APP CRS 215°	Rwy Idg 6005
	TDZE 3939
	Apt Elev 3957

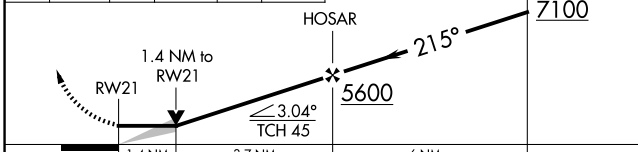
RNP APCH. MISSED APPROACH: Climb to 8800 direct COSIM and on track 304° to WIKOR and on track 034° to PONUE and hold.

Circling to Rwy 7, 25 NA at night.
 Circling NA south of Rwy 25 and southeast of Rwy 3.

AWOS-3PT 119.925	ALBUQUERQUE CENTER 135.875 292.15	CTAF 122.9 0
----------------------------	---	------------------------



8800	COSIM	WIKOR	PONUE
↑		tr 304°	tr 034°



CATEGORY	A	B	C	D
LNVA MDA	4400-1	461 (500-1)	4400-1 $\frac{3}{8}$	461 (500-1 $\frac{3}{8}$)
CIRCLING	4440-1 483 (500-1)	4540-1 583 (600-1)	4640-2 683 (700-2)	5580-3 1623 (1700-3)

ELEV 3957	TDZE 3939
-----------	-----------

215°

6005 X 76

5353 X 75

0.9% UP

0.8% UP

0.9% UP

25

MIRL Rwy 3-21 and 7-25 0

SC-3, 16 APR 2026 to 14 MAY 2026

SC-3, 16 APR 2026 to 14 MAY 2026