

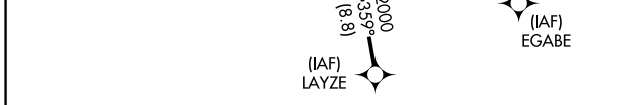
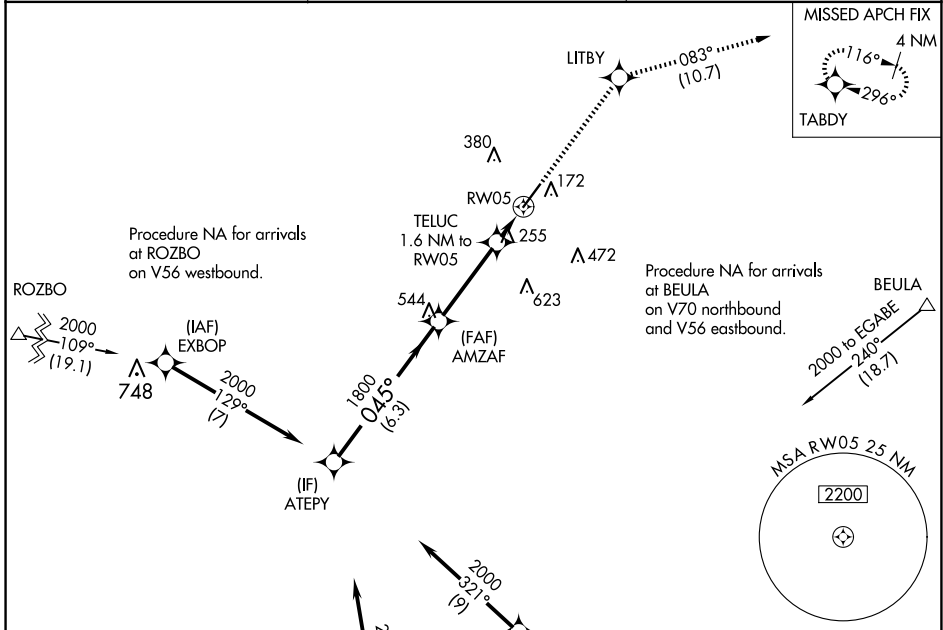
WAAS CH 63121 W05A	APP CRS 045°	Rwy Idg TDZE Apt Elev	6003 135 137
--	------------------------	-----------------------------	---

RNAV (GPS) RWY 5

DUPLIN COUNTY (DPL)

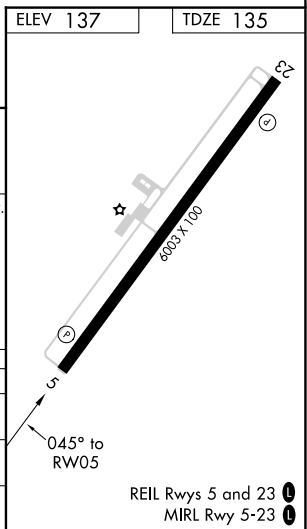
RNP APCH.	MISSED APPROACH: Climb to 2000 direct LITBY and on track 083° to TABDY and hold.
-----------	--

AWOS-3 120.675	SEYMOUR JOHNSON APP CON* 119.7 273.6	UNICOM 123.0 (CTAF) 0
--------------------------	--	---------------------------------



GP 3.00° TCH 40	ATEPY	AMZAF	LITBY	TABDY
	6.3 NM	3.5 NM	1.6 NM	

CATEGORY	A	B	C	D
LPV DA		385-3/4	250 (300-3/4)	
LNAV/VNAV DA		396-7/8	261 (300-7/8)	
LNAV MDA	520-1	385 (400-1)	520-1 1/8	385 (400-1 1/8)



SE-2, 16 APR 2026 to 14 MAY 2026

SE-2, 16 APR 2026 to 14 MAY 2026