

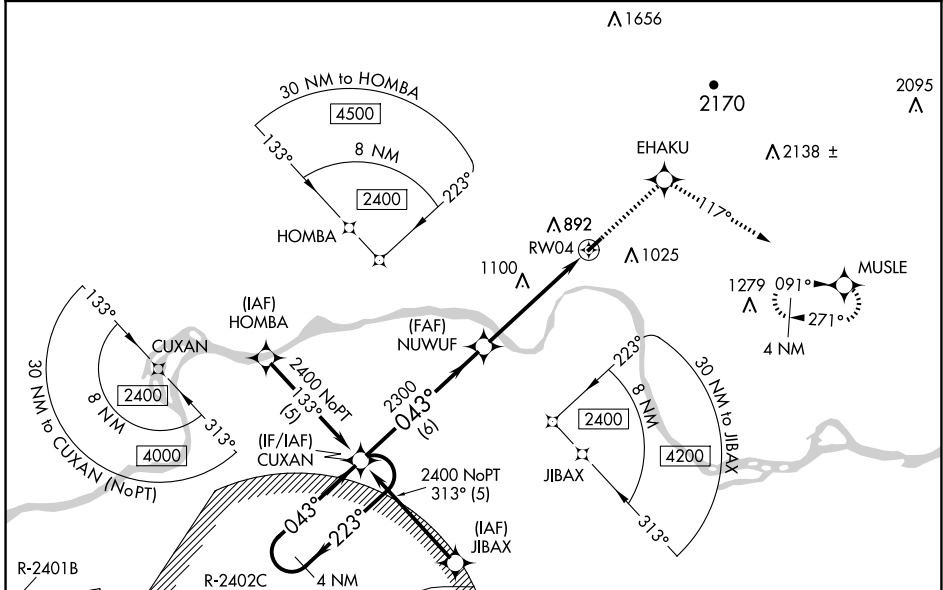
APP CRS	Rwy Idg	<b>3302</b>
<b>043°</b>	TDZE	<b>648</b>
	Apt Elev	<b>648</b>

# RNAV (GPS) RWY 4

OZARK/FRANKLIN COUNTY (7M5)

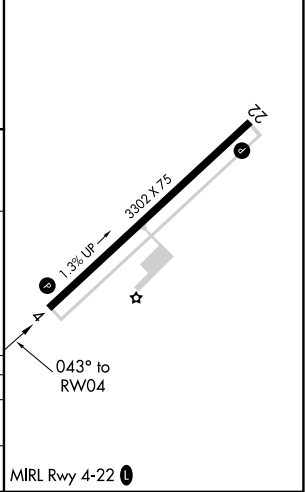
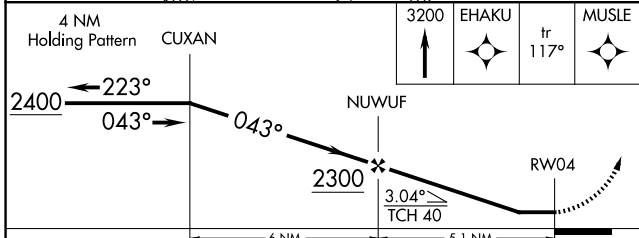
**▼** DME/DME RNP-0.3 NA. Visibility reduction by helicopters NA. Use Fort Smith altimeter setting; when not received, use Drake Fld altimeter setting and increase all MDAs 80 feet; increase LNAV Cat A/C and Circling Cat C visibility ¼ SM.  
**▲** NA MISSED APPROACH: Climb to 3200 direct EHAKU and on track 117° to MUSLE and hold.

RAZORBACK APP CON ★ <b>120.9 343.75</b>	UNICOM <b>122.8 (CTAF) 0</b>
--	---------------------------------



Holding at CUXAN and JIBAX initial NA when R-2402 active.

ELEV 648	TDZE 648
----------	----------



CATEGORY	A	B	C	D
LNAV MDA	1480-1 832 (900-1)	1480-1¼ 832 (900-1¼)	1480-2½ 832 (900-2½)	NA
CIRCLING	1480-1¼ 832 (900-1¼)		1500-2½ 852 (900-2½)	NA

SC-1, 16 APR 2026 to 14 MAY 2026

SC-1, 16 APR 2026 to 14 MAY 2026