

(FLIYN1.FLIYN) 25051

FLIYN ONE DEPARTURE (RNAV)

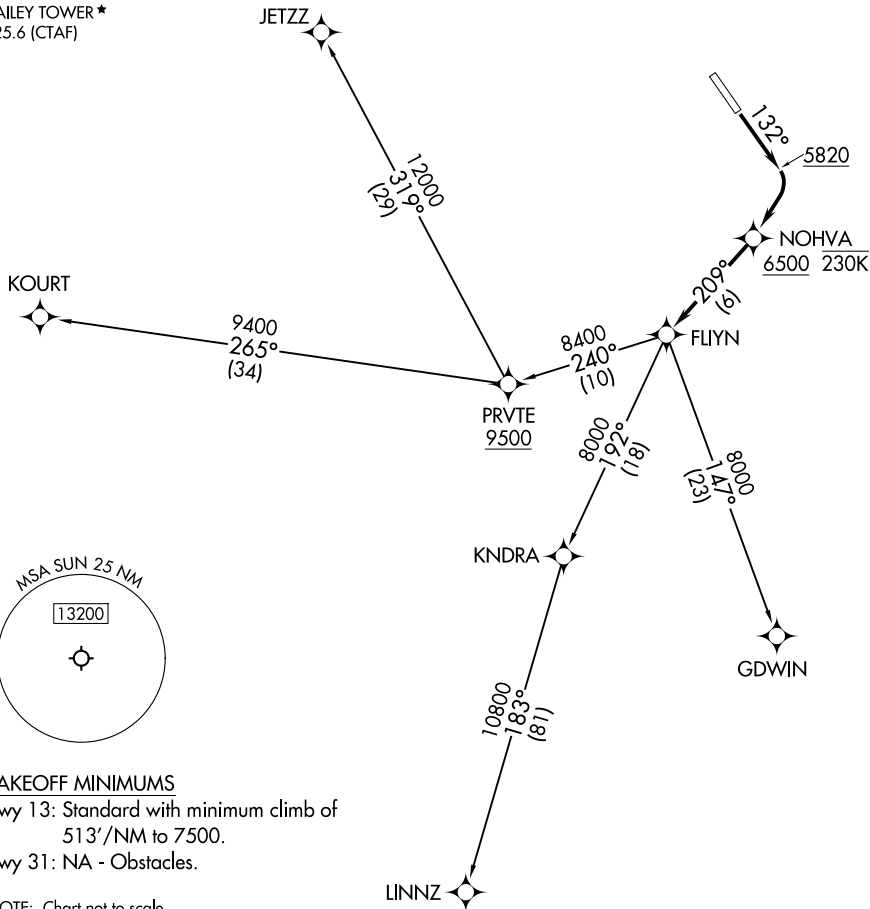
AL-6239 (FAA)

FRIEDMAN MEML (SUN)
HAILEY, IDAHO

SALT LAKE CENTER
118.05 363.0
GND CON
121.7
HAILEY TOWER *
125.6 (CTAF)

RNAV 1 - GPS.

**TOP ALTITUDE:
ASSIGNED BY ATC**



TAKEOFF MINIMUMS

Rwy 13: Standard with minimum climb of
513'/NM to 7500.

Rwy 31: NA - Obstacles.

NOTE: Chart not to scale.

DEPARTURE ROUTE DESCRIPTION

TAKEOFF RUNWAY 13: Climb on heading 132° to 5820, then right turn direct NOHVA at or above 6500 and at or below 230K, then on track 209° to FLIYN, then on transition. Maintain ATC assigned altitude. Expect filed altitude 10 minutes after departure.

GDWIN TRANSITION (FLIYN1.GDWIN)

JETZZ TRANSITION (FLIYN1.JETZZ)

KOURT TRANSITION (FLIYN1.KOURT)

LINNZ TRANSITION (FLIYN1.LINNZ)

FLIYN ONE DEPARTURE (RNAV)

(FLIYN1.FLIYN) 20FEB25

HAILEY, IDAHO
FRIEDMAN MEML (SUN)

NW-1, 16 APR 2026 to 14 MAY 2026

NW-1, 16 APR 2026 to 14 MAY 2026