

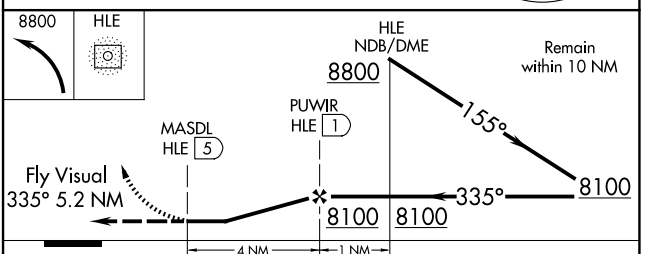
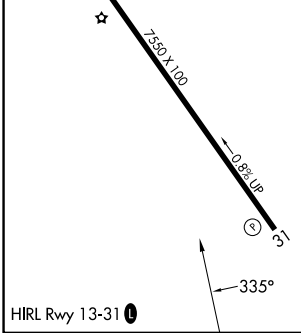
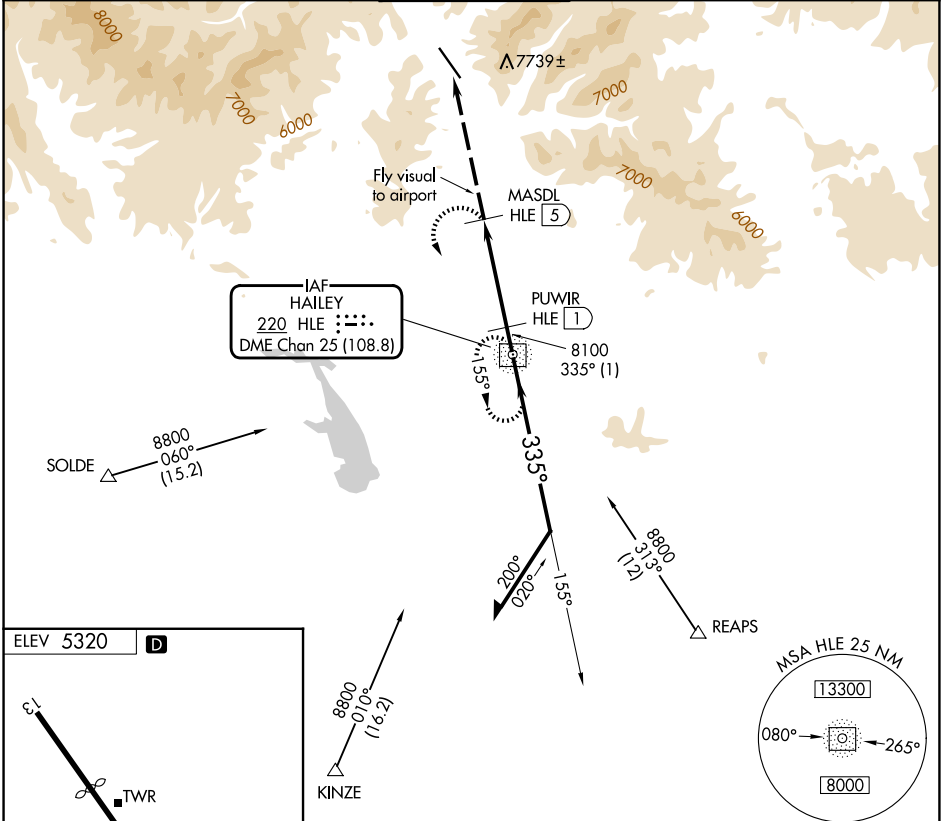
NDB/DME HLE 220	APP CRS 335°	Rwy Ldg TDZE Apt Elev N/A 5320
Chan 25 (108.8)		

NDB/DME-A FRIEDMAN MEML (SUN)

NA Circling NA NE of Rwy 13-31. Visibility reduction by helicopters NA. When contact tower closed, procedure not authorized. Occasional ADF needle swings away from the final approach course are to be expected north of missed approach point. Procedure NA at night.

MISSED APPROACH: Climbing left turn to 8800 direct HLE NDB and hold.

ATIS 128.225	SALT LAKE CENTER 118.05 353.0	HAILEY TOWER* 125.6 (CTAF)	GND CON 121.7	UNICOM 122.95
------------------------	---	--------------------------------------	-------------------------	-------------------------



CATEGORY	A	B	C	D
CIRCLING	8040-5	2720 (2800-5)		NA

NW-1, 16 APR 2026 to 14 MAY 2026

NW-1, 16 APR 2026 to 14 MAY 2026