

WAAS CH 62939 W31B	APP CRS 320°	Rwy Ldg TDZE 5289 Apt Elev 5320
--	------------------------	---

RNAV (GPS) Y RWY 31

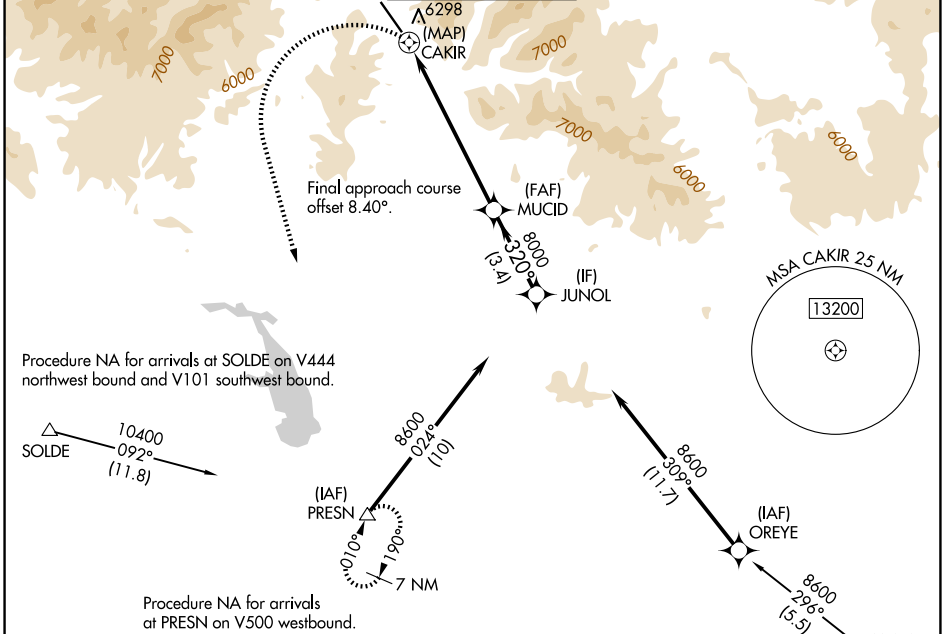
FRIEDMAN MEML (SUN)

RNP APCH - GPS.

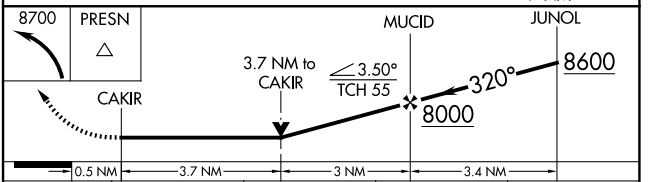
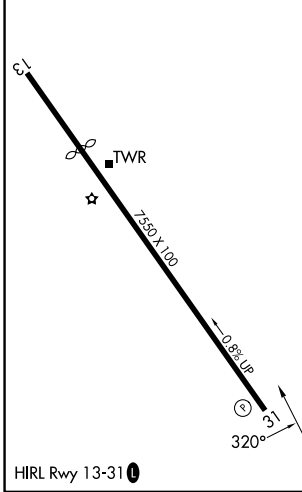
⚠ Circling NA northeast of Rwy 13-31. Rwy 31 helicopter visibility reduction below ¼ SM NA. When local altimeter setting not received, procedure NA.

⚠ MISSED APPROACH: (Do not exceed 185K until PRESN) Climbing left turn to 8700 direct PRESN and hold. *Missed approach requires minimum climb of 410 feet per NM to 7600.

ATIS 128.225	SALT LAKE CENTER 118.05 363.0	HAILEY TOWER ★ 125.6 (CTAF) 0	GND CON 121.7	UNICOM 122.95
------------------------	---	---	-------------------------	-------------------------



ELEV 5320	D	TDZE 5289
-----------	----------	-----------



CATEGORY	A	B	C	D
LP MDA*	6900-1¼ 1611 (1600-1¼)	6900-1½ 1611 (1600-1½)	6900-3	1611 (1600-3)
LNAV MDA*	7100-1¼ 1811 (1800-1¼)	7100-1½ 1811 (1800-1½)	7100-3	1811 (1800-3)
LP MDA	7220-1¼ 1931 (1900-1¼)	7220-1½ 1931 (1900-1½)	7220-3	1931 (1900-3)
LNAV MDA	7340-1¼ 2051 (2100-1¼)	7340-1½ 2051 (2100-1½)	7340-3	2051 (2100-3)
CIRCLING	7340-1¼ 2020 (2100-1¼)	7360-1½ 2040 (2100-1½)	7580-3 2260 (2300-3)	7940-3 2620 (2700-3)

NW-1, 16 APR 2026 to 14 MAY 2026

NW-1, 16 APR 2026 to 14 MAY 2026