

WAAS CH 66035 W13A	APP CRS 129°	Rwy Ldg 4003 TDZE 564 Apt Elev 585
--	------------------------	---

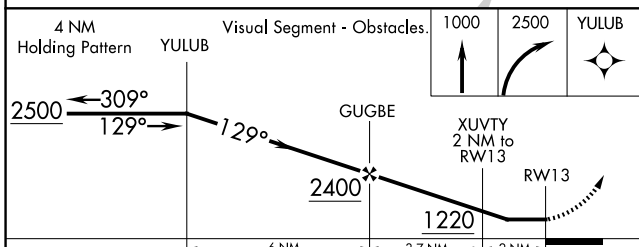
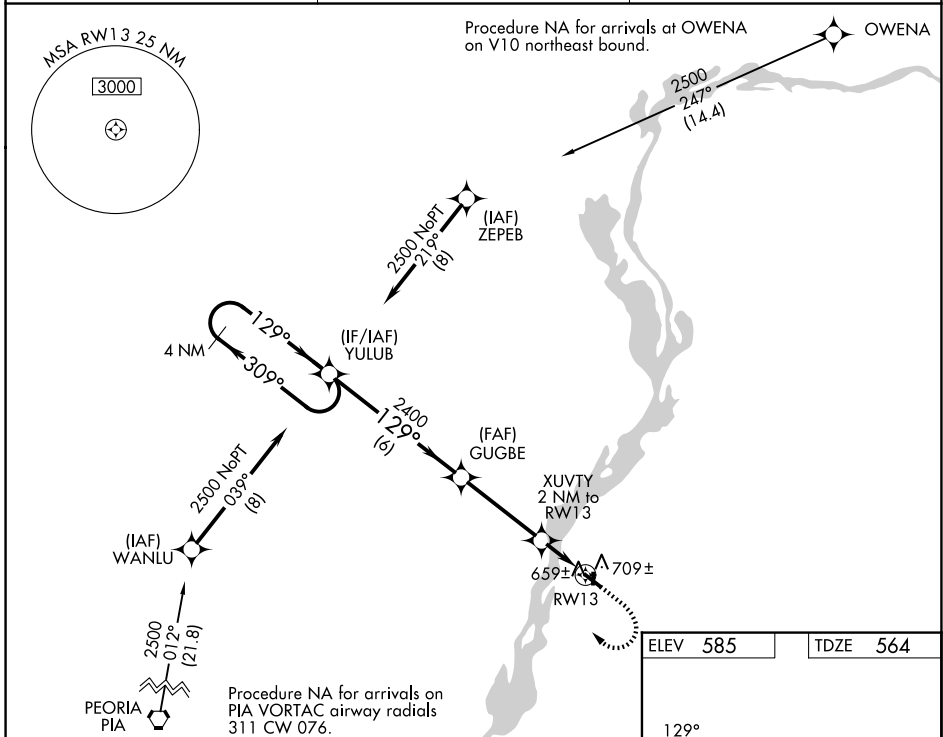
RNAV (GPS) RWY 13

MARSHALL COUNTY (C75)

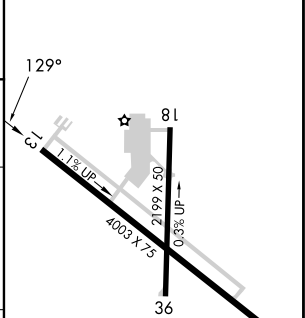
⚠ DME/DME RNP-0.3 NA. Helicopter visibility reduction below ¾ SM NA. When local altimeter setting not received, use Peru altimeter setting and increase all MDA 80 feet and increase LP and Circling Cat C visibilities ¼ mile and LNAV Cat C visibility ½ mile. Night landing: Rwy 18, 31, 36 NA.

MISSED APPROACH: Climb to 1000 then climbing right turn to 2500 direct YULUB and hold.

AWOS-3 119.425	CHICAGO CENTER 124.55 307.125	UNICOM 122.8 (CTAF)
--------------------------	---	-------------------------------



ELEV 585	TDZE 564
----------	----------



CATEGORY	A	B	C	D
LP MDA	920-1	356 (400-1)	920-1½ 356 (400-1½)	NA
LNAV MDA	960-1	396 (400-1)	960-1¼ 396 (400-1¼)	NA
CIRCLING	1100-1	515 (600-1)	1200-1¾ 615 (700-1¾)	NA

REIL Rwy 13 **Ⓛ**
MIRL Rwy 13-31 **Ⓛ**
LIRL Rwy 18-36

EC-3, 16 APR 2026 to 14 MAY 2026

EC-3, 16 APR 2026 to 14 MAY 2026