

WAAS CH 93707 W13A	APP CRS 130°	Rwy Ldg TDZE 2503 Apt Elev 2503
--	------------------------	---

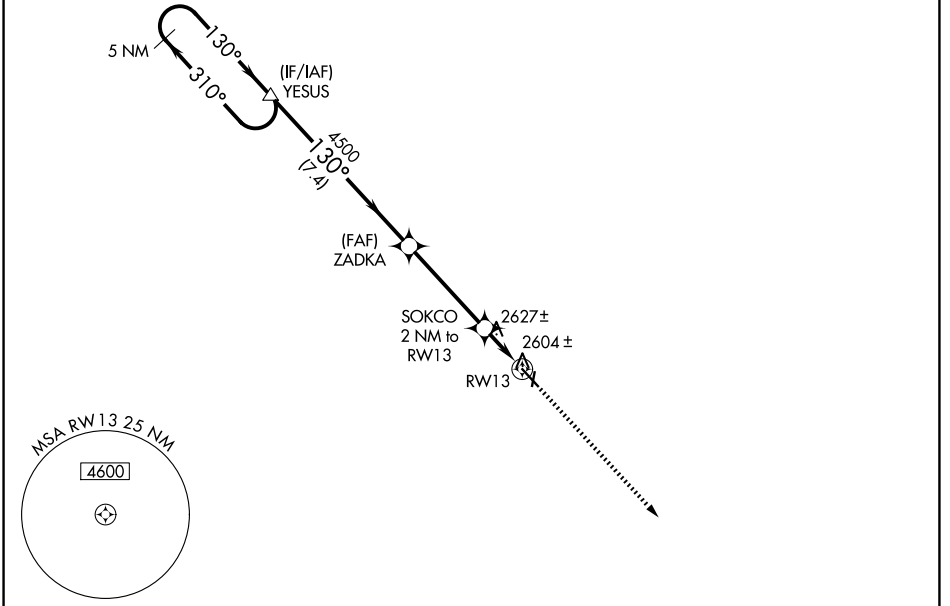
RNAV (GPS) RWY 13

COZAD MUNI (CZD)

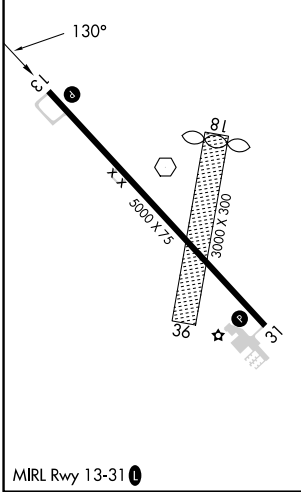
NA Circling NA to Rwy 18 and 36. Baro-VNAV NA. DME/DME RNP-0.3 NA.
 Use Lexington altimeter setting; when not received, use North Platte altimeter setting and increase all DAs 79 feet and LPV and LNAV/VNAV visibility ¼ mile all Cats, increase all MDAs 80 feet and Circling Cat C visibility ¼ mile. Helicopter visibility reduction below ¾ SM NA.

MISSED APPROACH: Climb to 5500 direct TOKKU and hold.

LXN AWOS-3 121.025	DENVER CENTER 132.7 226.675	UNICOM 122.8 (CTAF) 0
------------------------------	---------------------------------------	---------------------------------



ELEV 2503	TDZE 2503
------------------	------------------



5 NM Holding Pattern		YESUS	5500 TOKKU	
5000	310°	130°	ZADKA	SOKCO 2 NM to RW13
GP 3.00°		4500		RW13
TCH 52			*3180	
		7.4 NM	4 NM	2 NM
CATEGORY	A	B	C	D
LPV DA	2875-1¼ 372 (400-1¼)			NA
LNAV/VNAV DA	2913-1½ 410 (500-1½)			NA
LNAV MDA	2920-1	417 (500-1)	2920-1¼ 417 (500-1¼)	NA
CIRCLING	3080-1	577 (600-1)	3140-1¾ 637 (700-1¾)	NA

NC-2, 16 APR 2026 to 14 MAY 2026

NC-2, 16 APR 2026 to 14 MAY 2026