

WAAS CH 58108 W23A	APP CRS 229°	Rwy Idg TDZE 37 Apt Elev 40	6005
--	------------------------	---	-------------

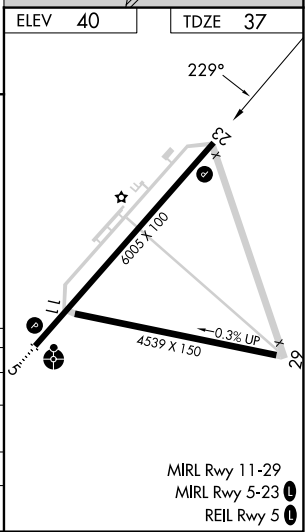
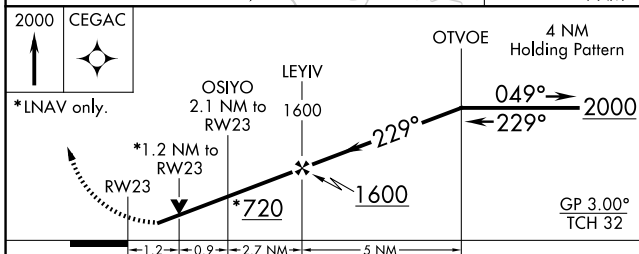
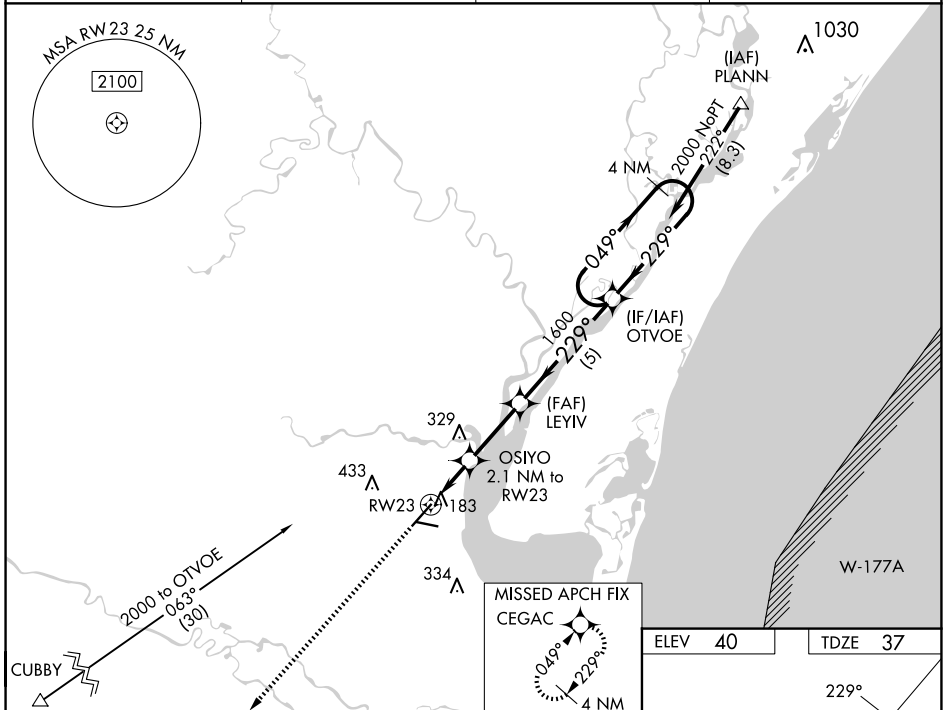
RNAV (GPS) RWY 23

GEORGETOWN COUNTY (GGE)

RNP APCH.
 ⚠ For uncompensated Baro-VNAV systems, LNAV/VNAV NA below -15°C or above 54°C. Circling Rwy 11, 29 NA at night. Rwy 23 helicopter visibility reduction below ¼ SM NA.

MISSED APPROACH: Climb to 2000 direct CEGAC and hold.

AWOS-3 118.275	MYRTLE BEACH APP CON * 127.4 257.95	GCO 121.725	UNICOM 123.0 (CTAF) 0
--------------------------	---	-----------------------	--



CATEGORY	A	B	C	D
LPV DA		323-1	286 (300-1)	
LNAV/VNAV DA		347-1½	310 (400-1½)	
LNAV MDA	440-1	403 (500-1)	440-1½	403 (500-1½)
CIRCLING	500-1	520-1	740-2	740-2¼
	460 (500-1)	480 (500-1)	700 (700-2)	700 (700-2¼)

MIRL Rwy 11-29
MIRL Rwy 5-23 **0**
REIL Rwy 5 **0**

SE-2, 16 APR 2026 to 14 MAY 2026

SE-2, 16 APR 2026 to 14 MAY 2026