

WAAS CH <b>63125</b> <b>W21A</b>	APP CRS <b>207°</b>	Rwy Idg TDZE Apt Elev	<b>5500</b> <b>35</b> <b>36</b>
--	------------------------	-----------------------------	---------------------------------------

# RNAV (GPS) RWY 21

PLYMOUTH MUNI (PMZ)

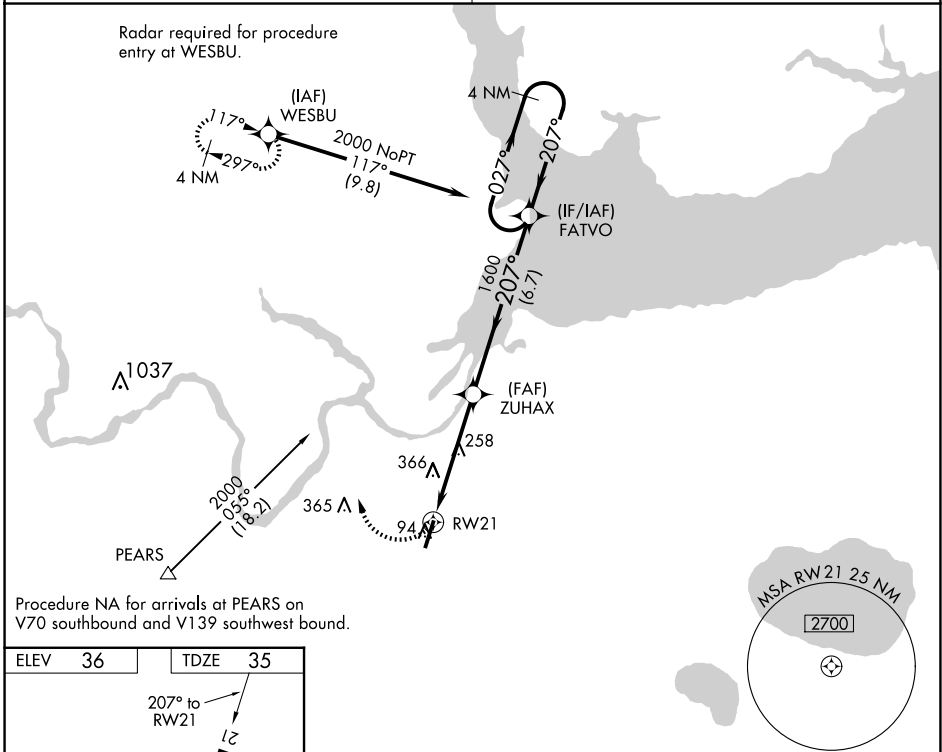
**⚠ NA** Use Northeastern Rgnl altimeter setting; when not received, use Coastal Carolina Rgnl altimeter setting and increase all MDA 80 feet; increase all Cat C visibilities ¼ SM. When VGSI inop, procedure NA at night. DME/DME RNP-0.3 NA.

MISSED APPROACH: Climbing right turn to 2000 direct WESBU and hold.

CHERRY POINT APP CON  
**119.35 377.175**

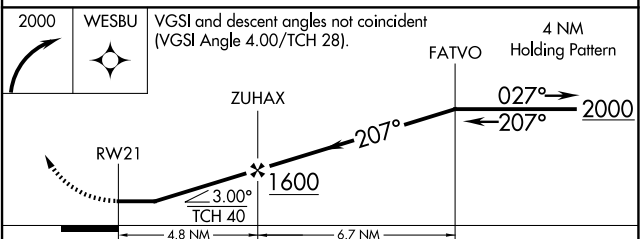
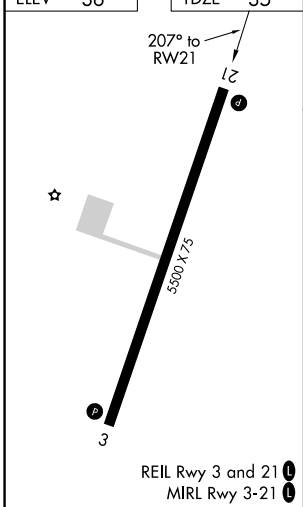
UNICOM  
**122.8 (CTAF) 0**

Radar required for procedure entry at WESBU.



Procedure NA for arrivals at PEARS on V70 southbound and V139 southwest bound.

ELEV 36	TDZE 35
---------	---------



CATEGORY	A	B	C	D
LP MDA	600-1	565 (600-1)	600-1½ 565 (600-1½)	NA
LNAV MDA	660-1	625 (700-1)	660-1¾ 625 (700-1¾)	NA
CIRCLING	660-1 624 (700-1)	720-1 684 (700-1)	720-2 684 (700-2)	NA

SE-2, 16 APR 2026 to 14 MAY 2026

SE-2, 16 APR 2026 to 14 MAY 2026