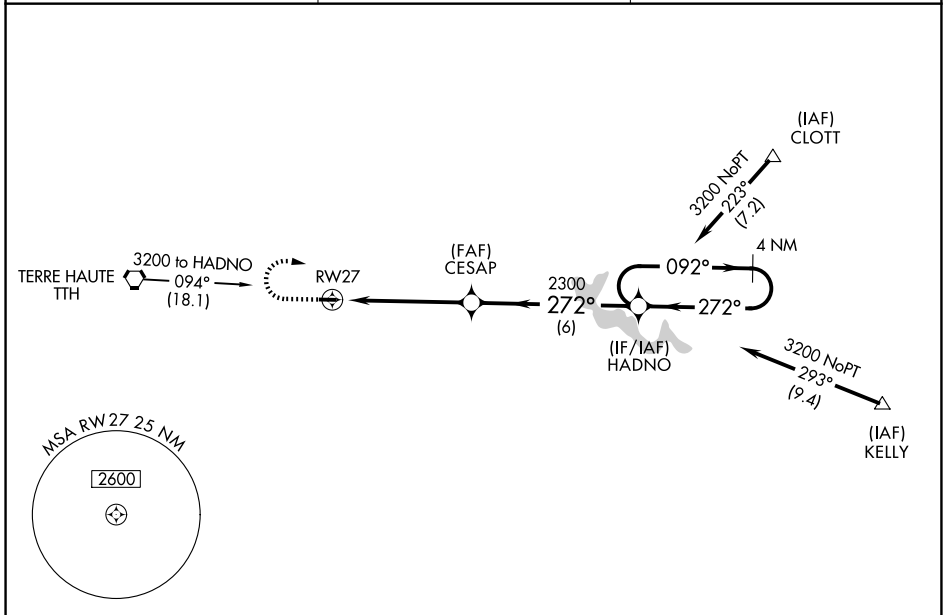


APP CRS 272°	Rwy Ldg TDZE Apt Elev	2499 645 645
------------------------	-----------------------------	---

RNAV (GPS) RWY 27
BRAZIL CLAY COUNTY/CHARLES B HALL FLD (ØI2)

RNP APCH - GPS.	MISSED APPROACH: Climb to 2300 then dimbing right turn to 3200 direct HADNO and hold.
▼ Use HUF altimeter setting. Procedure NA at night. ▲ NA Helicopter visibility reduction below 1 SM NA.	

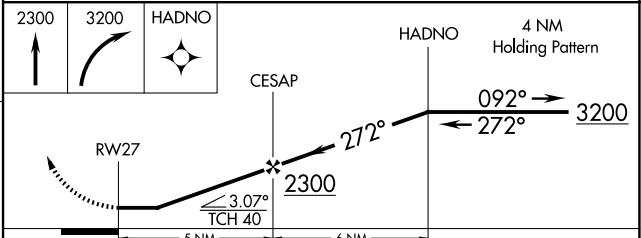
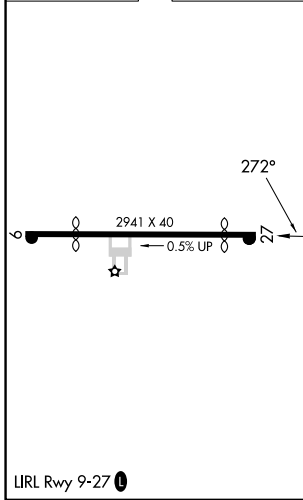
HUF ASOS 127.5	HULMAN APP CON 125.45 339.8	UNICOM 122.8 (CTAF) Ø
--------------------------	---------------------------------------	---------------------------------



EC-2, 16 APR 2026 to 14 MAY 2026

EC-2, 16 APR 2026 to 14 MAY 2026

ELEV 645	TDZE 645
----------	----------



CATEGORY	A	B	C	D
LNAV MDA	1240-1 595 (600-1)		NA	
CIRCLING	1240-1 595 (600-1)		NA	