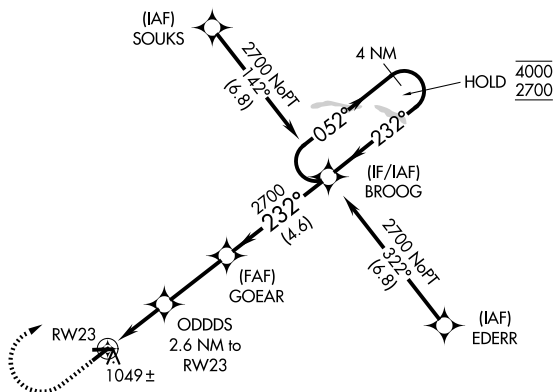
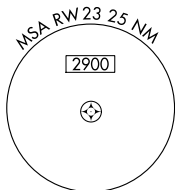


APP CRS	Rwy Ldg	3760
232°	TDZE	932
	Apt Elev	936

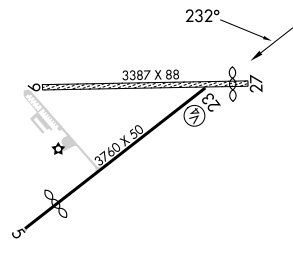
RNAV (GPS) RWY 23

SHERIDAN (5I4)

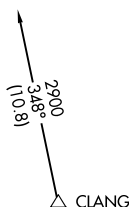
RNP APCH - GPS.		MISSED APPROACH: Climb to 1800 then climbing right turn to 2700 direct BROOG and hold.
<p>▲ NA Circling NA to Rwy 9 and 27. Procedure NA at night. Rwy 23 helicopter visibility reduction below 1 SM NA. Use Indianapolis Exec altimeter setting.</p>		
TYQ AWOS-3PT 120.725	INDIANAPOLIS APP CON 124.65 317.8	UNICOM 123.075 (CTAF) ①



ELEV 936	TDZE 932
----------	----------



Procedure NA for arrivals at CLANG on V14-192-210 southwest bound.



1800	2700	BROOG	4 NM Holding Pattern	
↑	↷	✧		
<p>ODDDS 2.6 NM to RWY 23</p>		<p>3.00° TCH 50</p>	<p>GOEAR</p>	
<p>1800</p>	<p>2700</p>	<p>4000</p>	<p>2700</p>	
<p>2.6 NM</p>	<p>2.8 NM</p>	<p>4.6 NM</p>		
CATEGORY	A	B	C	D
LNAV MDA	1340-1	408 (500-1)	1340-1½ 408 (500-1½)	NA
CIRCLING	1400-1 464 (500-1)	1420-1 484 (500-1)	1500-1½ 564 (600-1½)	NA