

WAAS CH <b>50506</b> <b>W28A</b>	APP CRS <b>284°</b>	Rwy Ldg TDZE <b>5800</b> <b>945</b> Apt Elev <b>945</b>
--	------------------------	--

**RNAV (GPS) RWY 28**  
DELAWARE MUNI/JIM MOORE FLD (D.L.Z)

RNP APCH.

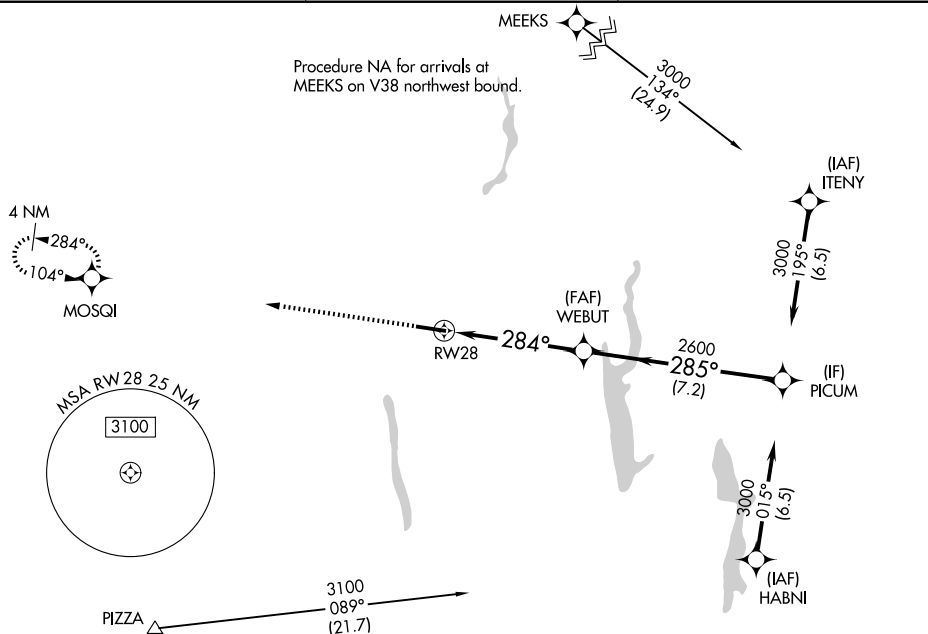
▼ For uncompensated Baro-VNAV systems, LNAV/VNAV NA below -16°C or above 54°C. Rwy 28 helicopter visibility reduction below ¾ SM NA.

MISSED APPROACH: Climb to 2600 direct MOSQI and hold.

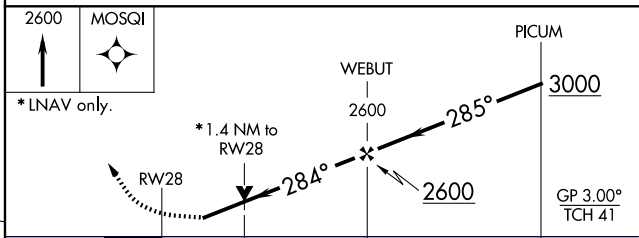
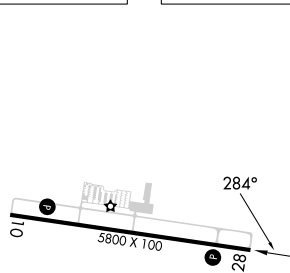
AWOS-3PT  
**119.025**

COLUMBUS APP CON  
**125.95 317.775**

UNICOM  
**122.7 (CTAF) 0**



ELEV **945** TDZE **945**



CATEGORY	A	B	C	D
LPV DA	1195-7/8 250 (300-7/8)			
LNAV/VNAV DA	1406-1 3/4 461 (500-1 3/4)			
LNAV MDA	1420-1	475 (500-1)	1420-1 3/8 475 (500-1 3/8)	
CIRCLING	1420-1	475 (500-1)	1560-1 3/4 615 (700-1 3/4)	1560-2 615 (700-2)

REIL Rws 10 and 28 0  
MIRL Rwy 10-28 0

EC-2, 16 APR 2026 to 14 MAY 2026

EC-2, 16 APR 2026 to 14 MAY 2026