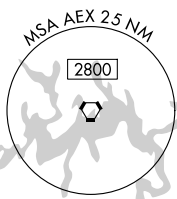


VORTAC AEX 116.1 Chan 108	APP CRS 110°	Rwy Ldg TDZE Apt Elev N/A N/A 79
---	------------------------	--

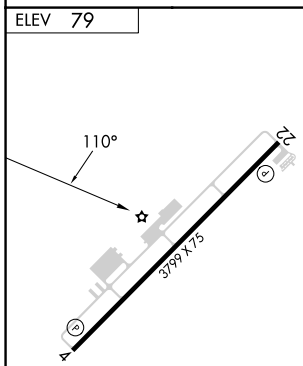
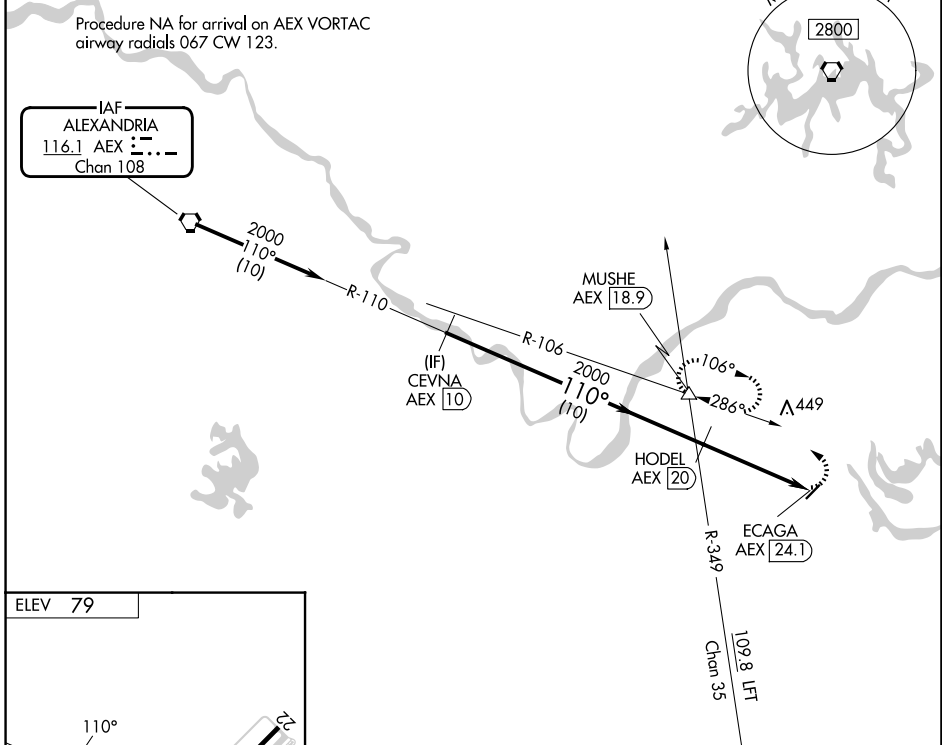
VOR-A
MARKSVILLE MUNI (MKV)

DME required.		MISSED APPROACH: Climbing left turn to 4000 on AEX VORTAC R-106 to MUSHE INT/AEX 18.9 DME and hold, continue climb-in-hold to 4000.	
⚠ NA Circling Rwy 22 NA at night. Use Esler Rgnl altimeter setting. ⚠ NA When not received, use Alexandria Intl altimeter setting.		AWOS-3PT 124.175	ESF ASOS 119.425
		MAKS APP CON 125.4 302.2	CTAF 122.9

Procedure NA for arrival on AEX VORTAC airway radials 067 CW 123.



IAF
ALEXANDRIA
116.1 AEX **116.1**
Chan **108**



ELEV 79

MIRL Rwy 4-22 **Ⓛ**
REIL Rwys 4 and 22 **Ⓛ**

	CEVNA AEX 10	HODEL AEX 20	ECAGA AEX 24.1	MUSHE AEX 18.9
	2000	2000		4000
	110°		110°	106°
	10 NM		4.1 NM	
CATEGORY	A	B	C	D
CIRCLING	760-1 681 (700-1)	820-1¼ 741 (800-1¼)	NA	

SC-4, 16 APR 2026 to 14 MAY 2026

SC-4, 16 APR 2026 to 14 MAY 2026