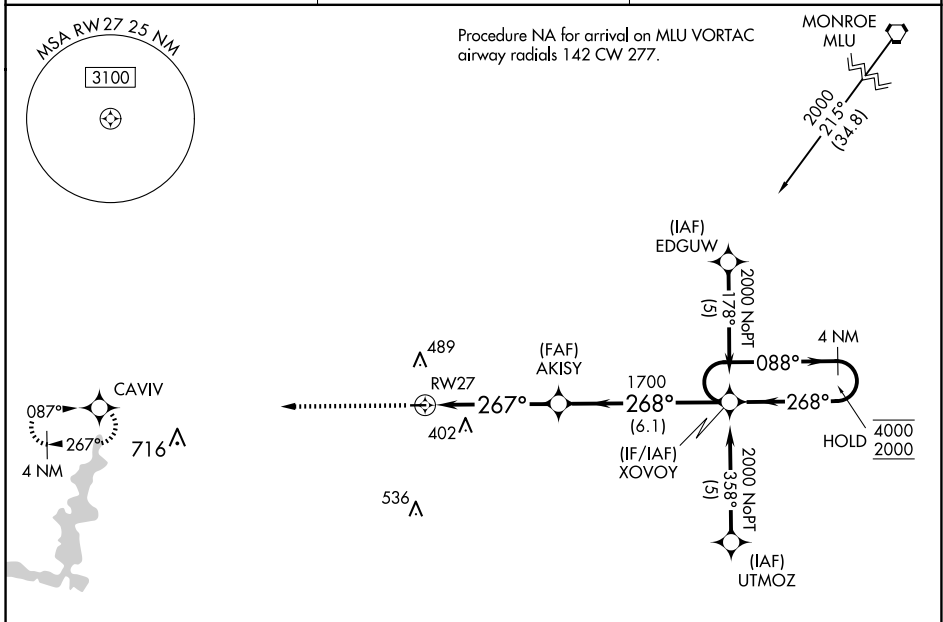


APP CRS	Rwy Idg	3002
267°	TDZE	146
	Apt Elev	146

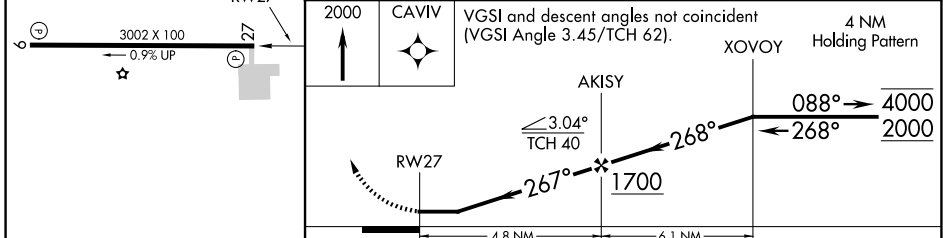
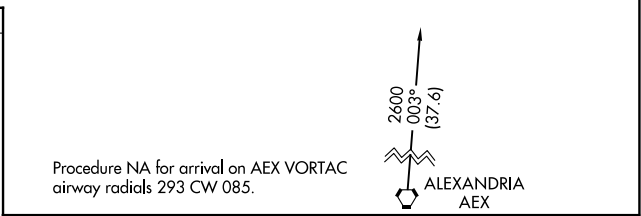
RNAV (GPS) RWY 27

DAVID G JOYCE (ØR5)

RNP APCH - GPS.		MISSED APPROACH: Climb to 2000 direct CAVIV and hold.
<p>▽ Rwy 27 helicopter visibility reduction below 1 SM NA. Use Alexandria Intl altimeter setting, when not received use Esler Rgnl altimeter setting. Procedure NA at night.</p> <p>△ NA</p>		
AEX ASOS 123.975	POLK APP CON 125.4 302.2	UNICOM 122.7 (CTAF) 0



ELEV 146	TDZE 146
----------	----------



CATEGORY	A	B	C	D
LNAV MDA	740-1	594 (600-1)		NA

SC-4, 16 APR 2026 to 14 MAY 2026

SC-4, 16 APR 2026 to 14 MAY 2026