

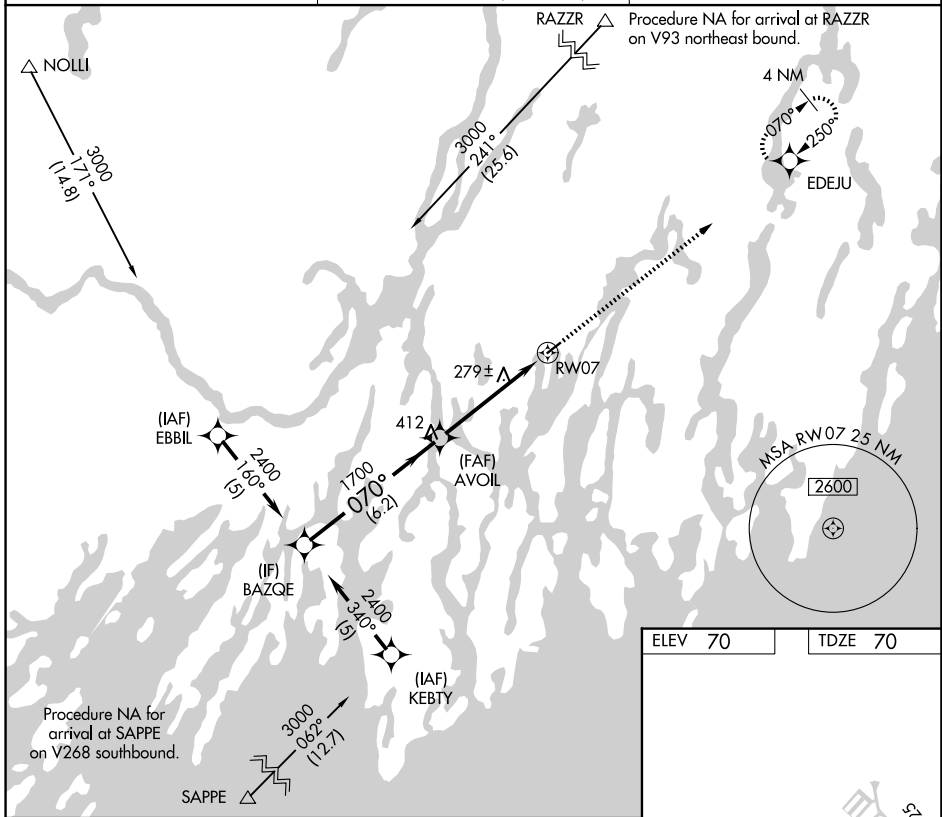
APP CRS	Rwy Ldg	3397
070°	TDZE	70
	Apt Elev	70

RNAV (GPS) RWY 7

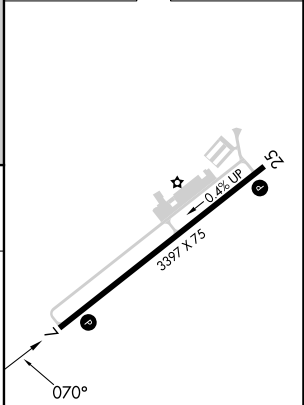
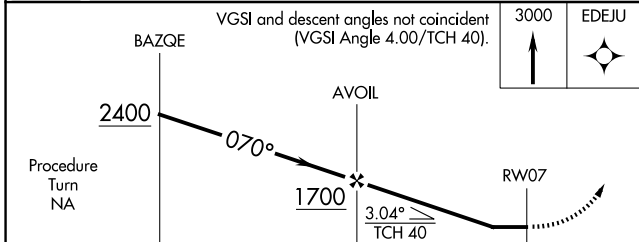
WISCASSET (IWI)

RNP APCH.	<p>Procedure NA at night. Rwy 7 helicopter visibility reduction below 1 SM NA. When local altimeter setting not received use Rockland altimeter setting and increase all MDA 80 feet.</p>	<p>MISSED APPROACH: Climb to 3000 direct EDEJU and hold.</p>
-----------	---	--

ASOS 135.725	PORTLAND APP CON★ 119.75 269.35 (112° -292°) 120.4 299.2 (293° -111°)	UNICOM 122.8 (CTAF) 0
------------------------	---	--



ELEV 70	TDZE 70
---------	---------



CATEGORY	A	B	C	D
LNAV MDA	560-1	490 (500-1)		NA

MIRL Rwy 7-25 **0**
 REIL Rwy 7 **0**
 REIL Rwy 25 **0**

NE-1, 16 APR 2026 to 14 MAY 2026

NE-1, 16 APR 2026 to 14 MAY 2026