

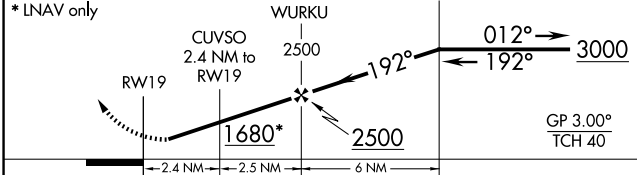
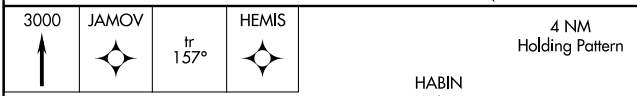
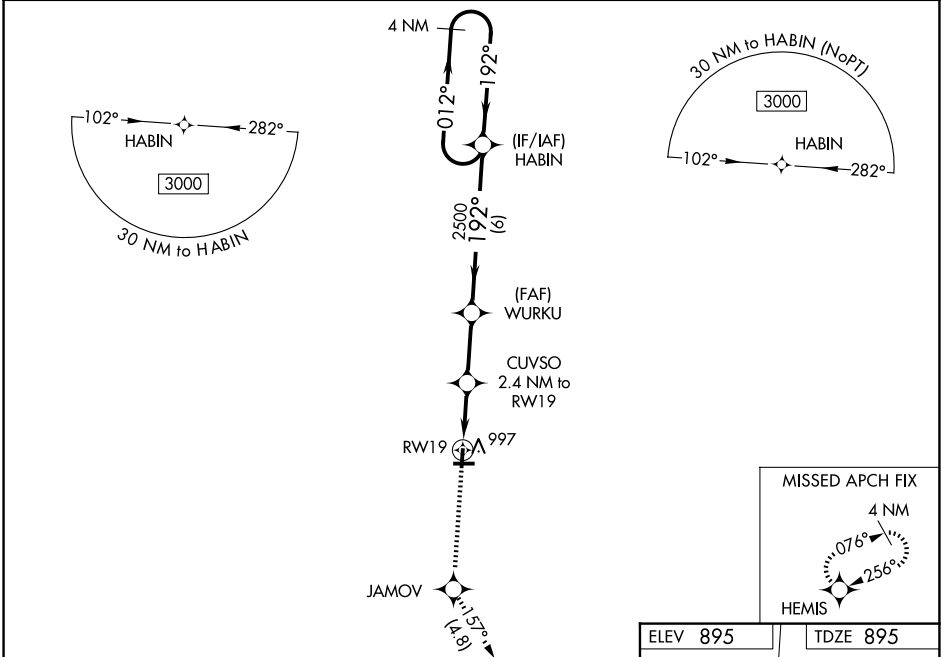
WAAS CH <b>70421</b> <b>W19A</b>	APP CRS <b>192°</b>	Rwy Ldg TDZE Apt Elev	<b>3500</b> <b>895</b> <b>895</b>
--	------------------------	-----------------------------	---

# RNAV (GPS) RWY 19

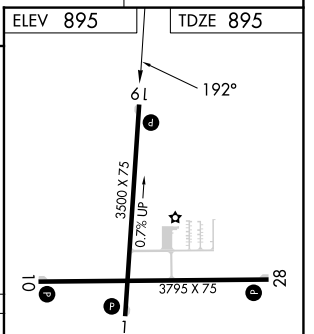
MARLETTE TOWNSHIP (77G)

RNP APCH.	Baro-VNAV NA. Rwy 19 helicopter visibility reduction below 1 SM NA. Use Caro altimeter setting; when not received use Bad Axe altimeter setting and increase LPV DA to 1230 feet; increase LNAV/VNAV DA to 1280 feet; increase all MDA 20 feet and Circling Cat D visibility ¼ SM. Straight-in Rwy 19 NA at night, Circling Rwy 10, 19 NA at night.	MISSED APPROACH: Climb to 3000 direct JAMOV and on track 157° to HEMIS and hold.
-----------	---	---

CFS AWOS-3P <b>119.275</b>	CLEVELAND CENTER <b>127.7 290.425</b>	UNICOM <b>122.8 (CTAF) 0</b>
-------------------------------	--	---------------------------------



CATEGORY	A	B	C	D
LPV DA		1214-1 1/8	319 (400-1 1/8)	
LNAV/VNAV DA		1264-1 1/4	369 (400-1 1/4)	
LNAV MDA	1340-1	445 (500-1)	1340-1 3/8	445 (500-1 3/8)
CIRCLING	1460-1	565 (600-1)	1460-1 1/2	1560-2 665 (700-2)



MIRL Rwy 1-19 and 10-28 0	
---------------------------	--

EC-1, 16 APR 2026 to 14 MAY 2026

EC-1, 16 APR 2026 to 14 MAY 2026