

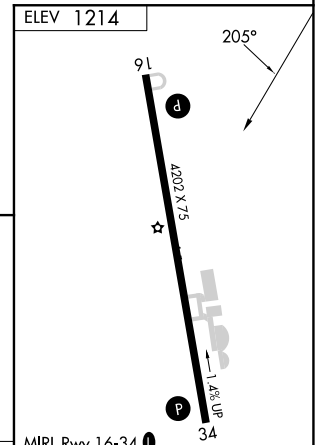
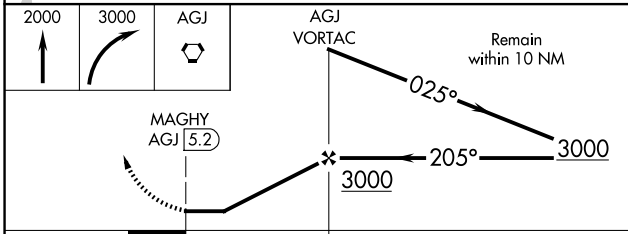
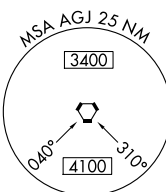
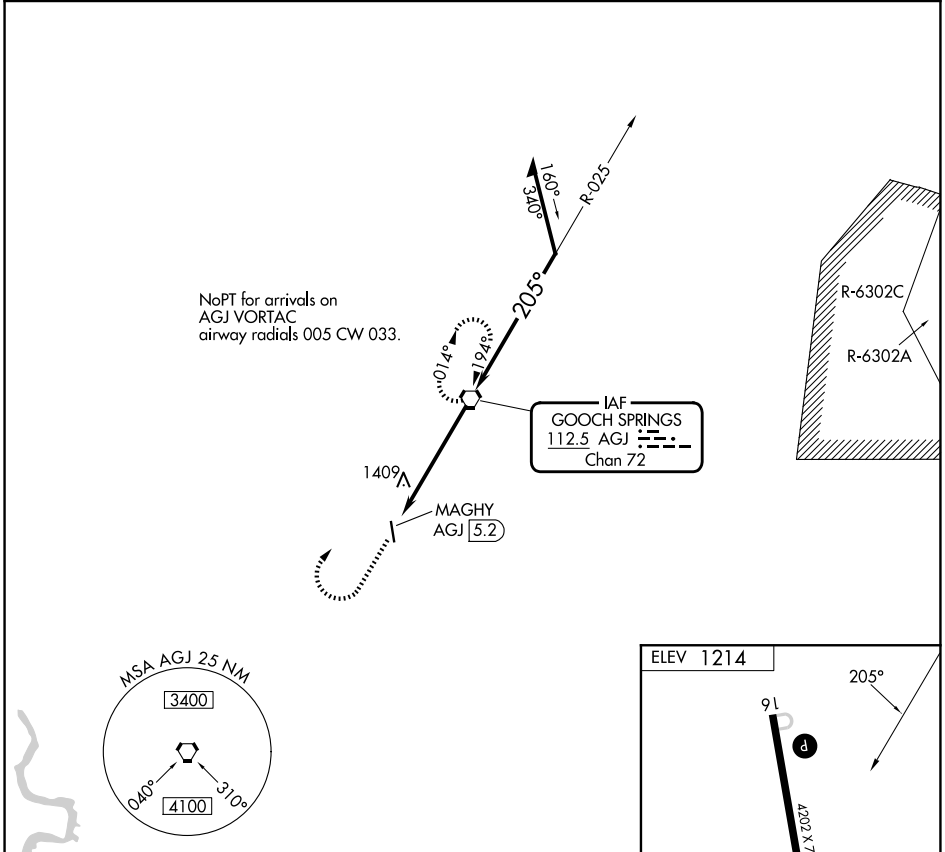
VORTAC AGJ <b>112.5</b> Chan <b>72</b>	APP CRS <b>205°</b>	Rwy Ldg TDZE Apt Elev <b>1214</b>	<b>N/A</b> <b>N/A</b>
--	------------------------	---	--------------------------

**VOR-A**  
LAMPASAS (LZZ)

**⚠** When local altimeter setting not received, use Robert Gray AAF altimeter setting and increase all MDAs 80 feet and visibility Cat C ½ SM. Circling Rwy 16 NA at night. Rwy 16 helicopter visibility reduction below 1 SM NA.

**MISSED APPROACH:** Climb to 2000 then climbing right turn to 3000 direct AGJ VORTAC and hold.

AWOS-3 <b>119.075</b>	GRAY APP CON <b>120.075 323.15</b>	UNICOM <b>122.8</b> (CTAF) <b>Ⓛ</b>
--------------------------	---------------------------------------	--



CATEGORY	A	B	C	D	FAF to MAP 5.2 NM					
CIRCLING	1680-1 466 (500-1)	1880-1 666 (700-1)	1880-1¼ 666 (700-1¼)	NA	Knots	60	90	120	150	180
					Min:Sec	5:12	3:28	2:36	2:05	1:44

SC-3, 16 APR 2026 to 14 MAY 2026

SC-3, 16 APR 2026 to 14 MAY 2026