

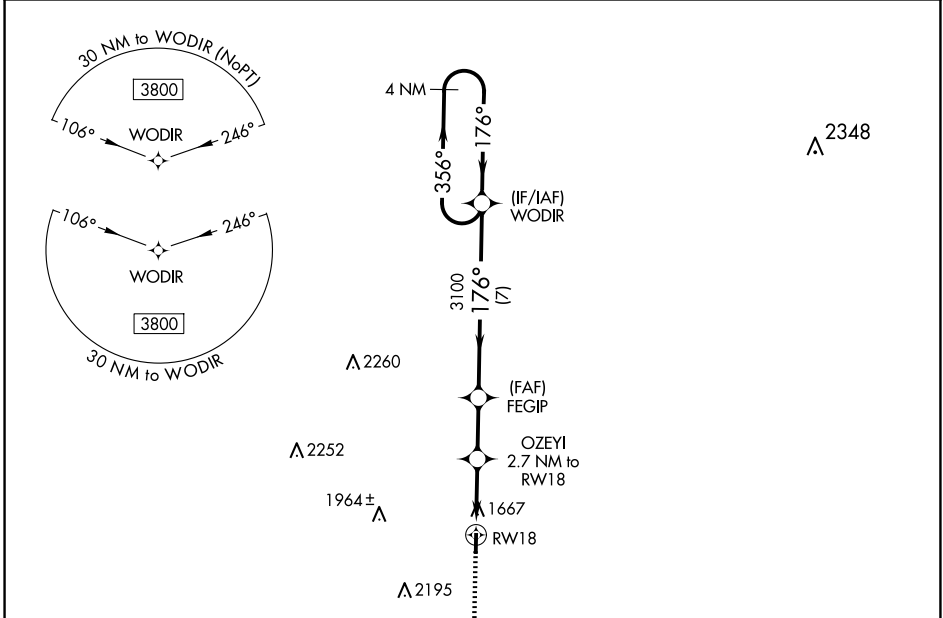
APP CRS	Rwy Idg	<b>3716</b>
<b>176°</b>	TDZE	<b>1502</b>
	Apt Elev	<b>1514</b>

# RNAV (GPS) RWY 18

MASON COUNTY (T92)

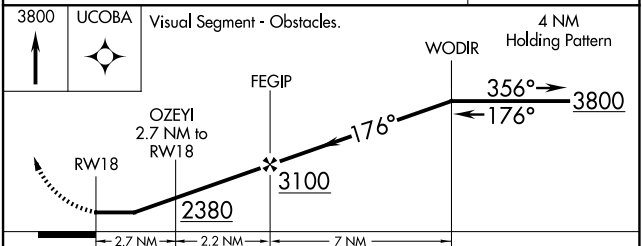
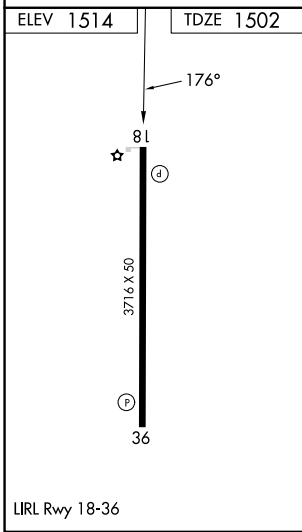
<p><b>▼</b> Rwy 18/36 helicopter visibility reduction below 1 SM NA. DME/DME RNP-0.3 NA. Procedure NA at night.</p> <p><b>▲</b> NA Use Brady altimeter setting; when not received, use Llano altimeter setting and increase all MDAs 20 feet.</p>	MISSED APPROACH: Climb to 3800 direct UCOBA and hold.
---	---

BBD AWOS-3 <b>118.375</b>	HOUSTON CENTER <b>132.35 317.5</b>	CTAF <b>122.9</b>
------------------------------	---------------------------------------	----------------------



SC-3, 16 APR 2026 to 14 MAY 2026

SC-3, 16 APR 2026 to 14 MAY 2026



CATEGORY	A	B	C	D
LNVA MDA	2080-1	578 (600-1)	NA	
<b>C</b> CIRCLING	2140-1	626 (700-1)	NA	