

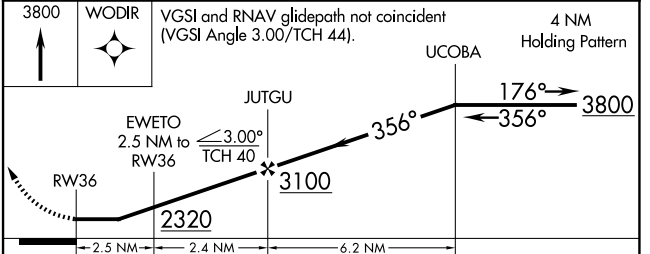
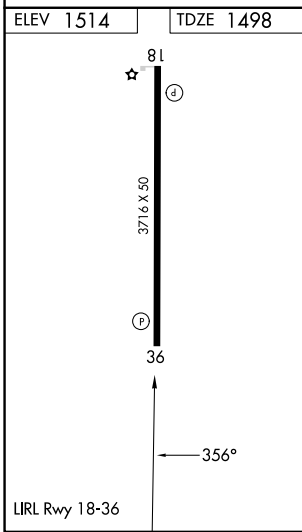
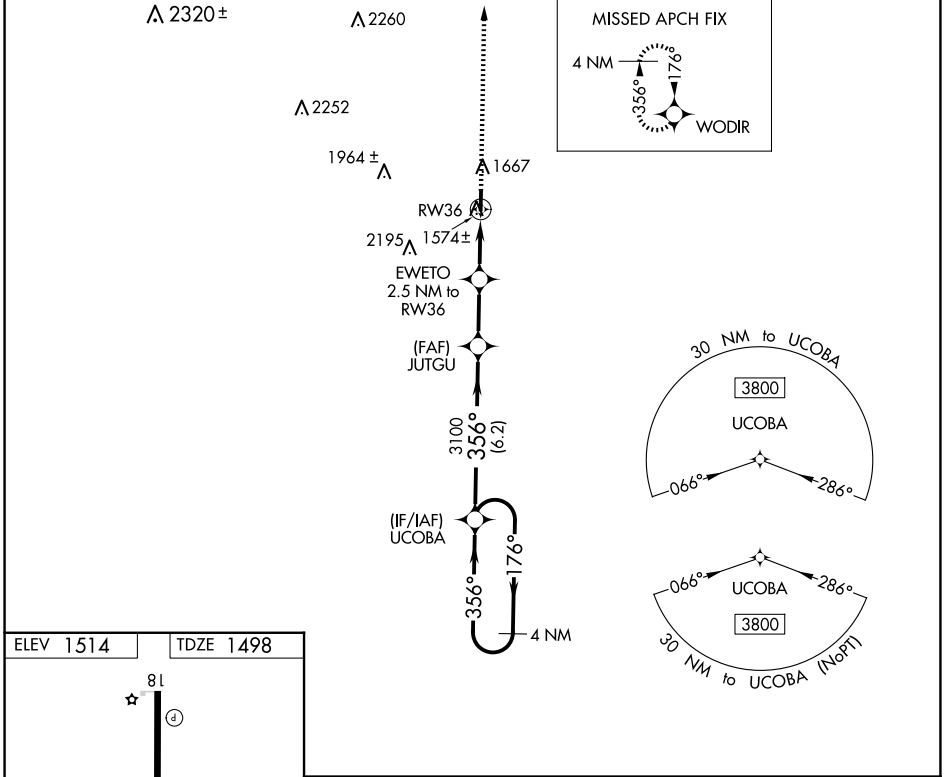
APP CRS <b>356°</b>	Rwy Idg <b>3716</b>
	TDZE <b>1498</b>
	Apt Elev <b>1514</b>

# RNAV (GPS) RWY 36

MASON COUNTY (T92)

RNP APCH - GPS.	MISSED APPROACH: Climb to 3800 direct WODIR and hold.
Rwy 36 helicopter visibility reduction below 1 SM NA. Procedure NA at night. Use Brady altimeter setting; when not received, use Llano altimeter setting and increase all MDAs 20 feet.	

BBD AWOS-3 <b>118.375</b>	HOUSTON CENTER <b>132.35 317.5</b>	CTAF <b>122.9</b>
------------------------------	---------------------------------------	----------------------



CATEGORY	A	B	C	D
LNAV MDA	1940-1	442 (500-1)	NA	
CIRCLING	2140-1	626 (700-1)	NA	

SC-3, 16 APR 2026 to 14 MAY 2026

SC-3, 16 APR 2026 to 14 MAY 2026