

WAAS CH <b>82133</b> <b>W13A</b>	APP CRS <b>127°</b>	Rwy Idg <b>5003</b> TDZE <b>598</b> Apt Elev <b>598</b>
--	------------------------	---

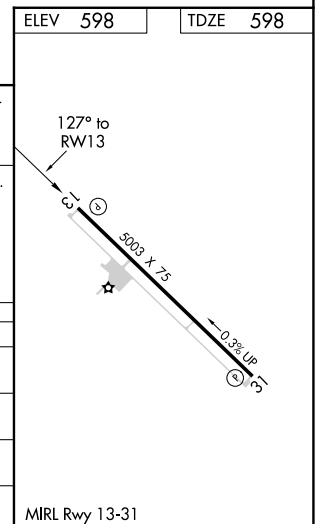
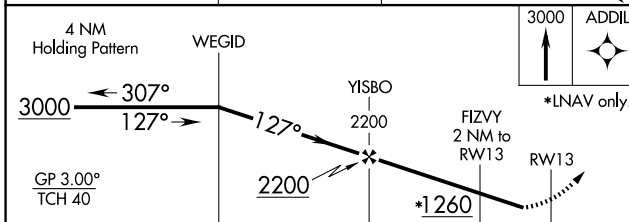
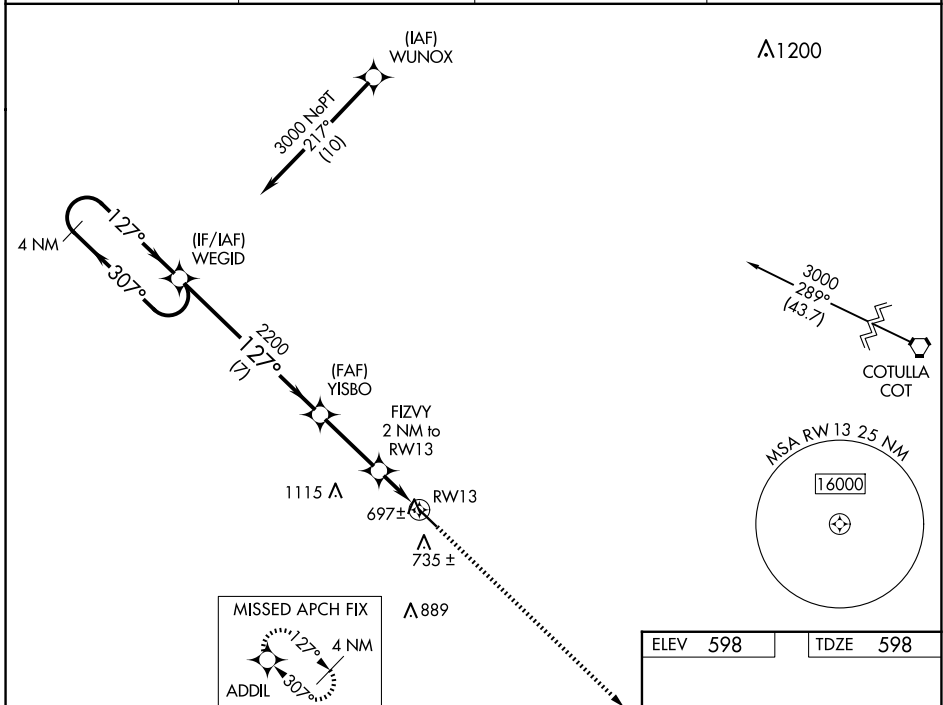
# RNAV (GPS) RWY 13

DIMITT COUNTY (CZT)

**Baro-VNAV NA. DME/DME RNP-0.3 NA. Use Cotulla altimeter setting; when not received use Uvalde altimeter setting and increase all DA 52 feet, all MDA 60 feet and increase LPV all Cats, LNAV/VNAV all Cats, and Circling Cat C visibility ¼ mile. Helicopter visibility reduction below ¾ SM NA.**

**MISSED APPROACH:** Climb to 3000 direct ADDIL and hold.

AWOS-3 <b>119.625</b>	COT ASOS <b>118.325</b>	HOUSTON CENTER <b>127.8 307.2</b>	UNICOM <b>122.8</b> (CTAF)
--------------------------	----------------------------	--------------------------------------	-------------------------------



CATEGORY	A	B	C	D
LPV DA	940-1½	342 (400-1½)		NA
LNAV/VNAV DA	940-1½	342 (400-1½)		NA
LNAV MDA	1040-1	442 (500-1)	1040-1½ 442 (500-1½)	NA
CIRCLING	1160-1 562 (600-1)	1240-1 642 (700-1)	1500-2¾ 902 (1000-2¾)	NA

MIRL Rwy 13-31

SC-3, 16 APR 2026 to 14 MAY 2026

SC-3, 16 APR 2026 to 14 MAY 2026