

WAAS CH 90424 W22A	APP CRS 220°	Rwy Idg 4401 TDZE 35 Apt Elev 35
--	------------------------	---

RNAV (GPS) RWY 22

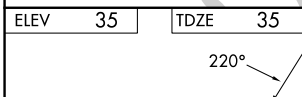
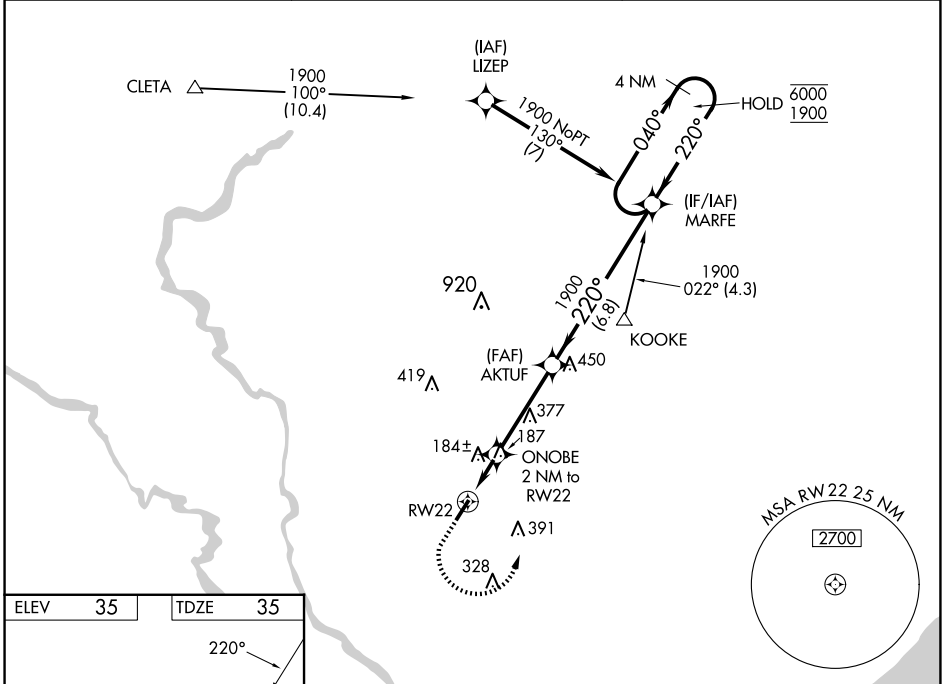
CONWAY-HORRY COUNTY (HYW)

RNP APCH.

⚠ Rwy 22 helicopter visibility reduction below 1 SM NA. Straight-in Rwy 22 at night, operational VGSI required, remain on or above VGSI glidepath until threshold. For uncompensated Baro-VNAV systems, LNAV/VNAV NA below -15°C or above 54°C.

MISSED APPROACH: Climb to 500 then climbing left turn to 1900 direct MARFE and hold.

AWOS-3 119.525	MYRTLE BEACH APP CON★ 127.4 257.95	UNICOM 122.7 (CTAF)
--------------------------	--	-------------------------------



ELEV 35	TDZE 35	<p>500 1900 MARFE VGSI and RNAV glidepath not coincident (VGSI Angle 3.00/TCH 43).</p> <p>4 NM Holding Pattern</p>		
<p>*LNAV only.</p>		<p>ONOBE 2 NM to RW22</p>	<p>AKTUF 1900</p>	<p>MARFE</p>
<p>RW22</p>		<p>700*</p>	<p>1900</p>	<p>040° → 6000 ← 220° 1900</p>
<p>2 NM</p>		<p>3.7 NM</p>	<p>6.8 NM</p>	<p>GP 3.00° TCH 40</p>
CATEGORY	A	B	C	D
LPV DA	285-1		250 (300-1)	
LNAV/VNAV DA	438-1½		403 (500-1½)	
LNAV MDA	440-1 405 (500-1)		440-1½ 405 (500-1½)	
CIRCLING	520-1	540-1	700-1¾	700-2
	485 (500-1)	505 (600-1)	665 (700-1¾)	665 (700-2)

SE-2, 16 APR 2026 to 14 MAY 2026

SE-2, 16 APR 2026 to 14 MAY 2026