

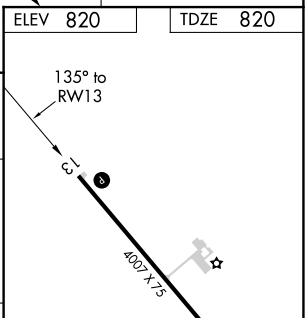
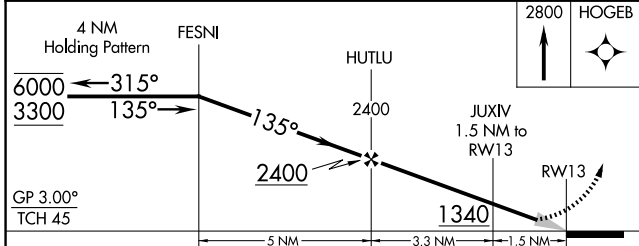
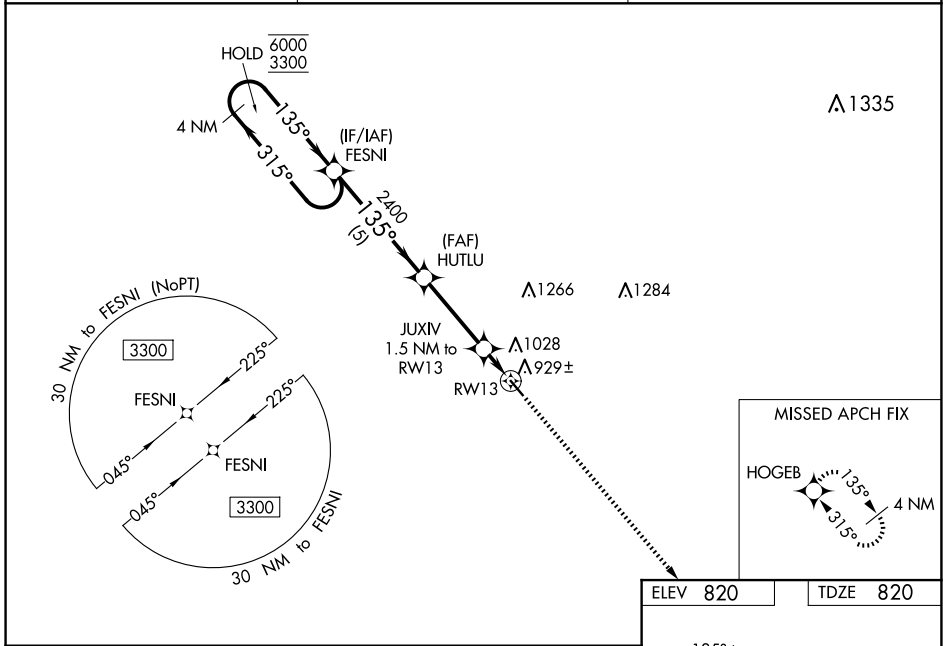
WAAS CH 40333 W13A	APP CRS 135°	Rwy Idg TDZE Apt Elev	4007 820 820
----------------------------------------	------------------------	-----------------------------	-----------------------------------------

RNAV (GPS) RWY 13

HALLOCK MUNI (HCO)

RNP APCH-GPS.	<p>MISSED APPROACH: Climb to 2800 direct HOGEB and hold.</p>
<p>▼ Baro-VNAV NA when using Grafton altimeter setting. For uncompensated Baro-VNAV systems, LNAV/VNAV NA below -16°C or above 54°C. When local altimeter setting not received, use Grafton altimeter setting and increase LPV DA to 1082 feet; increase LNAV/VNAV DA to 1161 feet; increase all MDAs 80 feet and LNAV visibility Cat C ¼ SM, and Circling visibility Cat C ¼ SM.</p>	

AWOS-3 126.475	MINNEAPOLIS CENTER 132.15 269.6	UNICOM 122.8 (CTAF) 0
--------------------------	-------------------------------------------	----------------------------------------



CATEGORY	A	B	C	D
LPV DA	1020-1	200 (200-1)		NA
LNAV/VNAV DA	1099-1	279 (300-1)		NA
LNAV MDA	1180-1	360 (400-1)		NA
C CIRCLING	1380-1	560 (600-1)	1380-1½ 560 (600-1½)	NA

ELEV 820 TDZE 820

REIL Rwy 13 and 31 **0**
MIRL Rwy 13-31 **0**

NC-1, 16 APR 2026 to 14 MAY 2026

NC-1, 16 APR 2026 to 14 MAY 2026