

WAAS CH 45933 W31A	APP CRS 315°	Rwy Idg TDZE Apt Elev	4007 820 820
--	------------------------	-----------------------------	---

RNAV (GPS) RWY 31

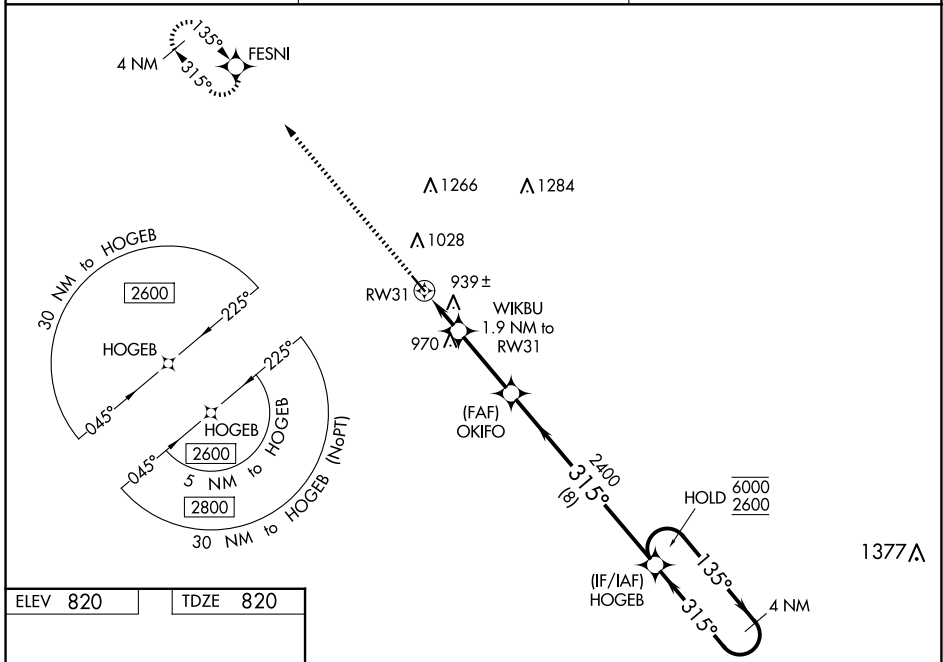
HALLOCK MUNI (HCO)

RNP APCH-GPS.

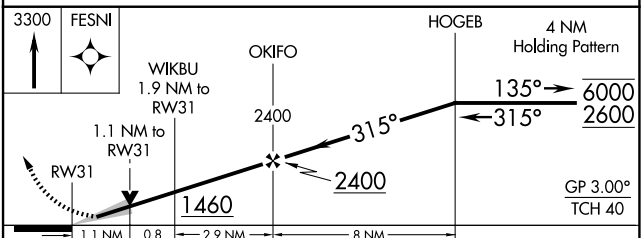
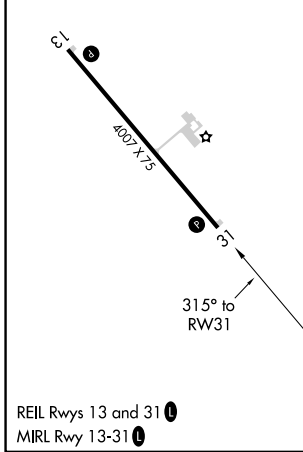
⚠ For uncompensated Baro-VNAV systems, LNAV/VNAV NA below -16°C or above 54°C. When local altimeter setting not received, use Grafton altimeter setting and increase LPV DA To 1082 feet; increase LNAV/VNAV DA to 1132 feet; increase all MDAs 80 feet and LNAV visibility Cat C 3/8 SM, and Circling visibility Cat C 1/4 SM. Baro-VNAV and VDP NA when using Grafton altimeter setting.

MISSED APPROACH: Climb to 3300 direct FESNI and hold, continue climb-in-hold to 3300.

AWOS-3 126.475	MINNEAPOLIS CENTER 132.15 269.6	UNICOM 122.8 (CTAF) 0
--------------------------	---	---------------------------------



ELEV 820	TDZE 820
----------	----------



CATEGORY	A	B	C	D
LPV DA		1020-1	200 (200-1)	NA
LNAV/VNAV DA		1070-1	250 (300-1)	NA
LNAV MDA		1200-1	380 (400-1)	NA
C CIRCLING	1380-1	560 (600-1)	1380-1½ 560 (600-1½)	NA

NC-1, 16 APR 2026 to 14 MAY 2026

NC-1, 16 APR 2026 to 14 MAY 2026