

WAAS CH <b>69403</b> W15A	APP CRS <b>148°</b>	Rwy Ldg TDZE Apt Elev	<b>4000</b> <b>361</b> <b>367</b>
---------------------------------	------------------------	-----------------------------	---

# RNAV (GPS) RWY 15

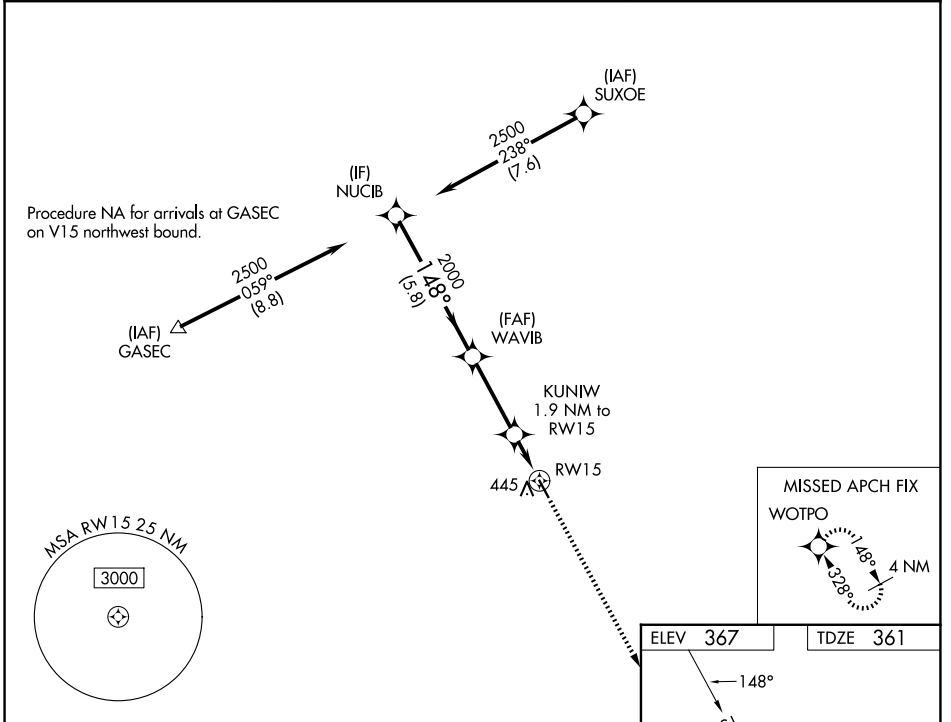
COULTER FLD (CFD)

RNP APCH - GPS.

**⚠** Rwy 15 helicopter visibility reduction below 3/4 SM NA. Baro-VNAV NA and VDP NA when using CLL altimeter setting. When local altimeter setting not received, use CLL altimeter setting and increase LPV and LNAV/VNAV DA to 661 feet; increase all MDAs 40 feet.

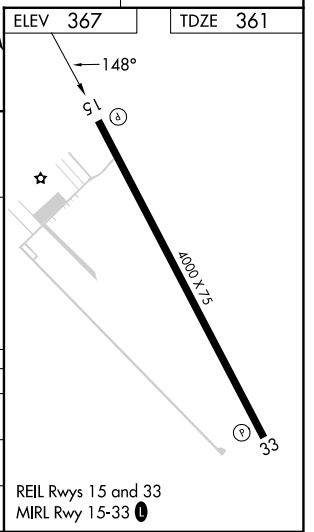
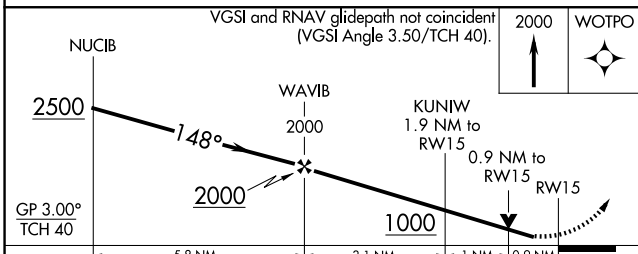
**⚠** MISSED APPROACH: Climb to 2000 direct WOTPO and hold.

AWOS-3PT <b>125.975</b>	HOUSTON APP CON <b>134.3 360.85</b>	UNICOM <b>123.0 (CTAF)</b> <b>①</b>
----------------------------	--	--



SC-5, 16 APR 2026 to 14 MAY 2026

SC-5, 16 APR 2026 to 14 MAY 2026



CATEGORY		A	B	C	D
LPV DA		636-1	275 (300-1)		NA
LNAV/VNAV DA		636-1	275 (300-1)		NA
LNAV MDA		720-1	359 (400-1)		NA