

APP CRS **181°**
 Rwy Ldg TDZE **5007 314**
 Apt Elev **319**

RNAV (GPS) RWY 18

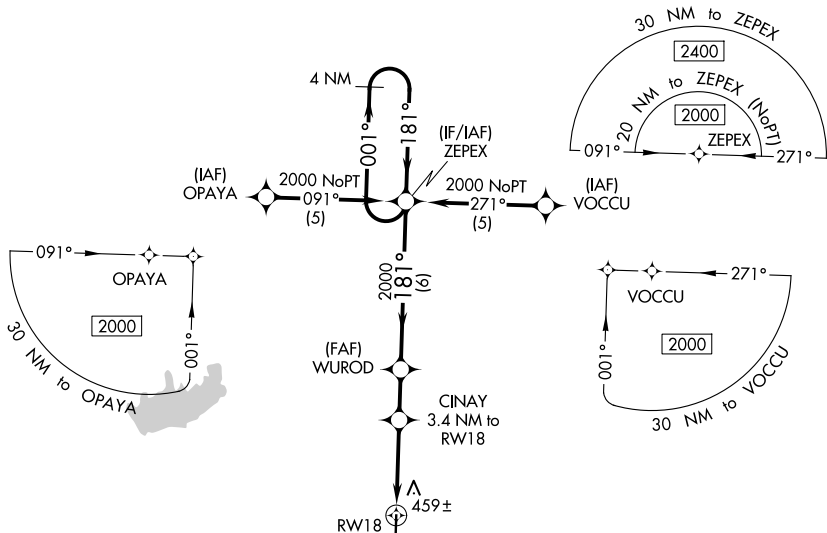
RALPH C WEISER FLD (AGO)

RNP APCH - GPS.

▼ When local altimeter setting not received, use El Dorado altimeter setting and increase all MDAs 60 feet. VDP NA with El Dorado altimeter setting. Rwy 18 helicopter visibility reduction below 3/4 SM NA.

▲ NA MISSED APPROACH: Climb to 2000 direct REPAE and hold.

AWOS-3 **118.05** FORT WORTH CENTER **128.2 269.1** UNICOM **122.8 (CTAF) 0**



SC-1, 16 APR 2026 to 14 MAY 2026

SC-1, 16 APR 2026 to 14 MAY 2026

