

WAAS CH 82329 W04A	APP CRS 045°	Rwy Idg TDZE Apt Elev	5010 578 578
--	------------------------	-----------------------------	---

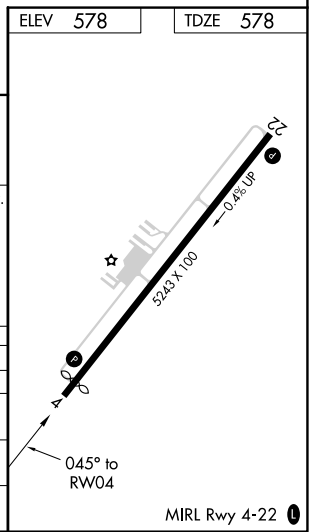
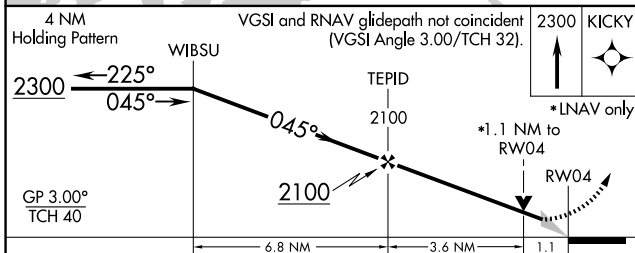
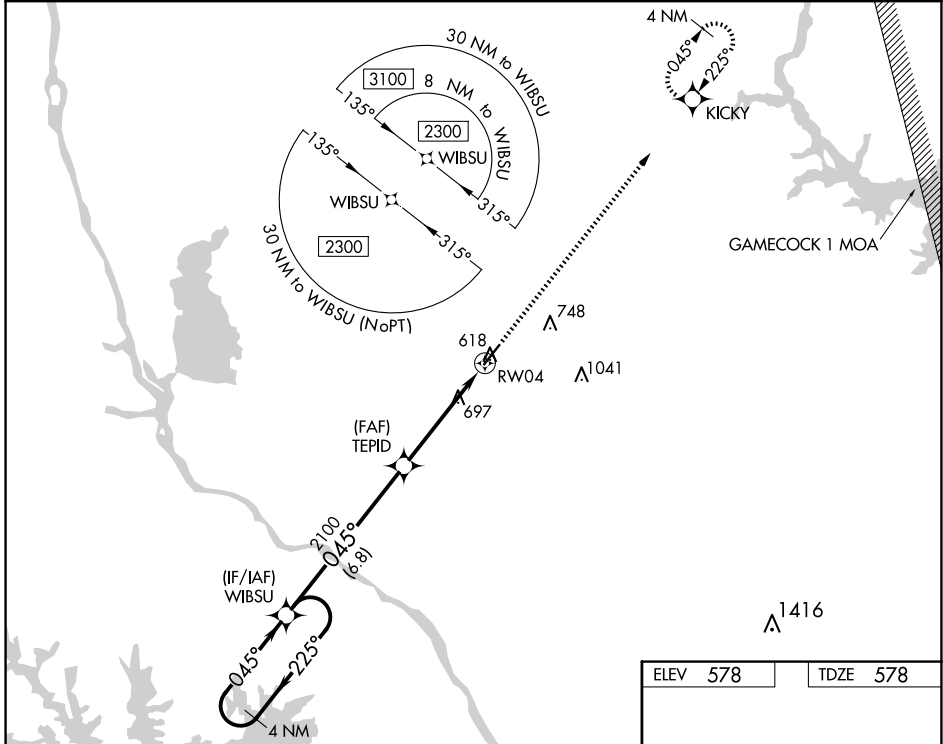
RNAV (GPS) RWY 4

FAIRFIELD COUNTY (F'DW)

⚠ For uncompensated Baro-VNAV systems, LNAV/VNAV NA below -16°C (4°F) or above 54°C (130°F). DME/DME RNP-0.3 NA.

⚠ MISSED APPROACH: Climb to 2300 direct KICKY and hold.

AWOS-3 119.075	COLUMBIA APP CON 133.4 285.6	UNICOM 123.05 (CTAF) 0
--------------------------	--	----------------------------------



CATEGORY	A	B	C	D
LPV DA		828-7/8	250 (300-7/8)	
LNAV/VNAV DA		828-7/8	250 (300-7/8)	
LNAV MDA	960-1	382 (400-1)	960-1 1/8	382 (400-1 1/8)
C CIRCLING	980-1 402 (500-1)	1040-1 462 (500-1)	1080-1 1/2 502 (600-1 1/2)	1360-2 1/2 782 (800-2 1/2)

SE-2, 16 APR 2026 to 14 MAY 2026

SE-2, 16 APR 2026 to 14 MAY 2026