

WAAS CH <b>45816</b> W18A	APP CRS <b>184°</b>	Rwy Idg TDZE Apt Elev	<b>4000</b> <b>752</b> <b>754</b>
---------------------------------	------------------------	-----------------------------	---

# RNAV (GPS) RWY 18

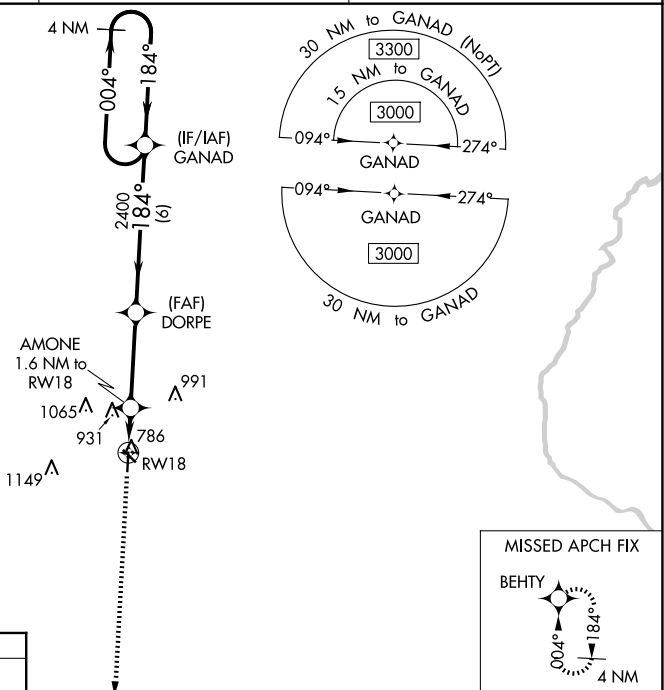
WASHINGTON MUNI (A WG)

RNP APCH.

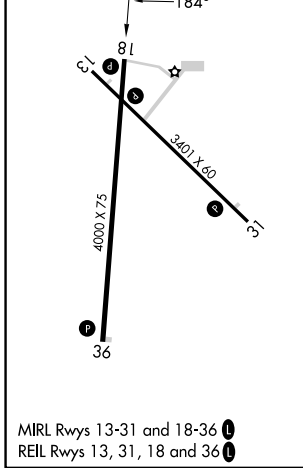
▼ For uncompensated Baro-VNAV systems, LNAV/VNAV NA below -6°C (22°F) or above 54°C (130°F).  
 ▲ Baro-VNAV NA when using Iowa City altimeter setting. When local altimeter setting not received, use Iowa City altimeter setting: increase LPV DA to 1064 feet, LNAV/VNAV DA to 1116 feet; increase all MDA 80 feet and visibility LNAV and Circling Cat C ¼ SM.

MISSED APPROACH:  
Climb to 3000 direct  
BEHTY and hold.

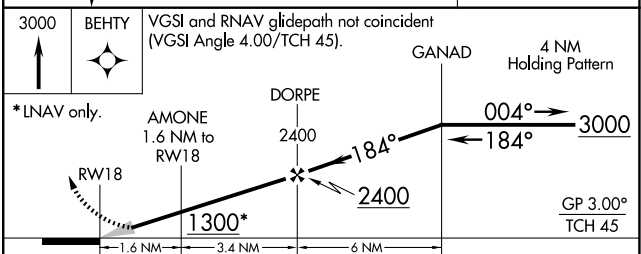
AWOS-3 <b>127.825</b>	CHICAGO CENTER <b>135.6 370.95</b>	UNICOM <b>122.7 (CTAF) 0</b>
--------------------------	---------------------------------------	---------------------------------



ELEV 754	TDZE 752
----------	----------



MIRL Rwy 13-31 and 18-36  
REL Rwy 13, 31, 18 and 36



CATEGORY	A	B	C	D
LPV DA	1002-1 250 (300-1)			NA
LNAV/VNAV DA	1054-1 302 (300-1)			NA
LNAV MDA	1160-1	408 (500-1)	1160-1½ 408 (500-1½)	NA
<b>C</b> CIRCLING	1200-1 446 (500-1)	1260-1 506 (600-1)	1500-2¼ 746 (800-2¼)	NA

NC-3, 16 APR 2026 to 14 MAY 2026

NC-3, 16 APR 2026 to 14 MAY 2026