

WAAS CH <b>77923</b> <b>W19A</b>	APP CRS <b>194°</b>	Rwy Idg TDZE Apt Elev	<b>6002</b> <b>4482</b> <b>4514</b>
--	------------------------	-----------------------------	---

# RNAV (GPS) RWY 19

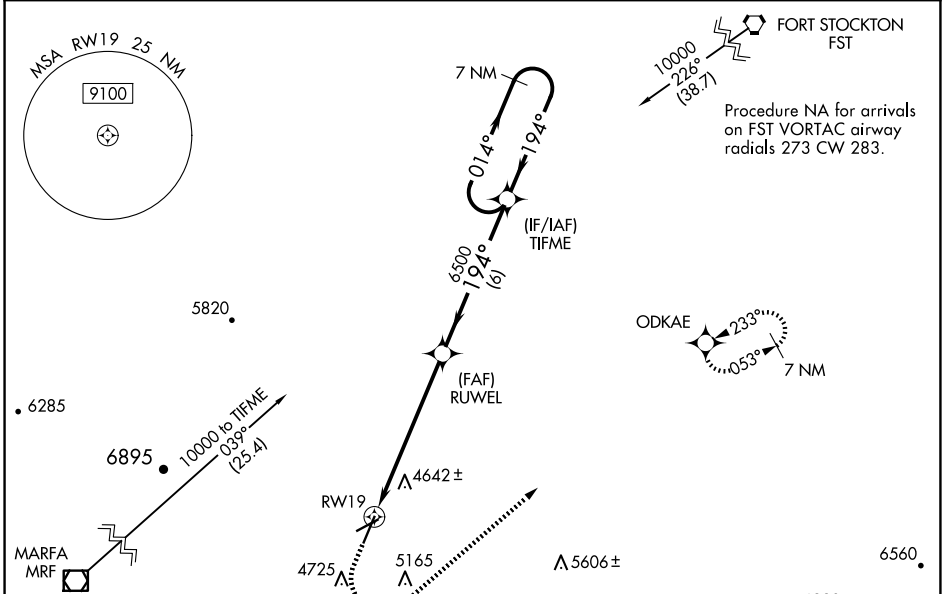
ALPINE-CASPARIS MUNI (E38)

RNP APCH - GPS.

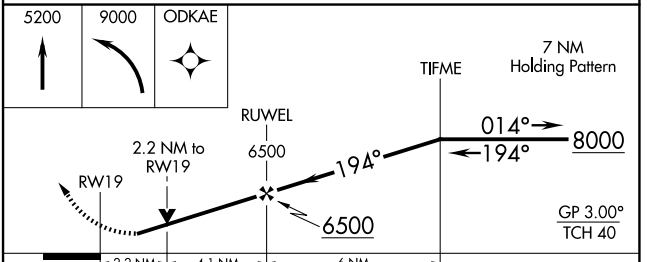
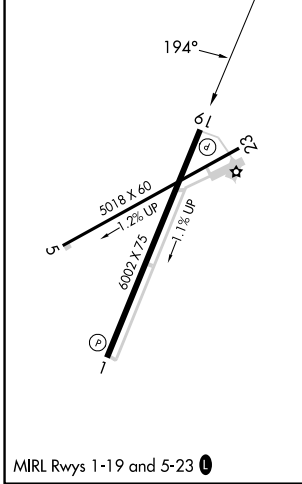
**⚠** For uncompensated Baro-VNAV systems, LNAV/VNAV NA below -23°C or above 54°C. Circling NA W of Rwy 1-19. Rwy 19 helicopter visibility reduction below ¾ SM NA.

**⚠** MISSED APPROACH: (Do not exceed 165K until ODKAE) Climb to 5200 then climbing left turn to 9000 direct ODKAE and hold, continue climb-in-hold to 9000.

AWOS-3 <b>119.025</b>	ALBUQUERQUE CENTER <b>135.875 292.15</b>	UNICOM <b>122.8 (CTAF) 0</b>
--------------------------	---	---------------------------------



ELEV 4514	TDZE 4482
-----------	-----------



CATEGORY	A	B	C	D
LPV DA	4964-1 <sup>3</sup> / <sub>8</sub>	482 (500-1 <sup>3</sup> / <sub>8</sub> )		NA
LNAV/VNAV DA	5125-1 <sup>7</sup> / <sub>8</sub>	643 (700-1 <sup>7</sup> / <sub>8</sub> )		NA
LNAV MDA	5180-1	698 (700-1)	5180-2 698 (700-2)	NA
<b>C</b> CIRCLING	5180-1 666 (700-1)	5460-1 <sup>1</sup> / <sub>4</sub> 946 (1000-1 <sup>1</sup> / <sub>4</sub> )	5760-3 1246 (1300-3)	NA