

VOR/DME FLM 117.0 Chan 117	APP CRS 107°	Rwy Idg TDZE Apt Elev N/A N/A 913
--	------------------------	---

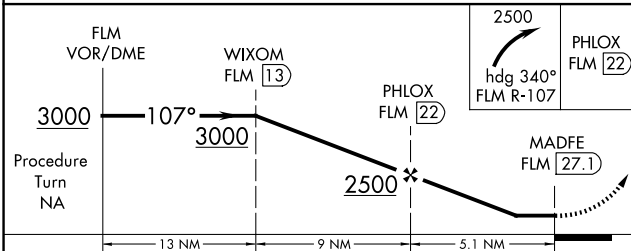
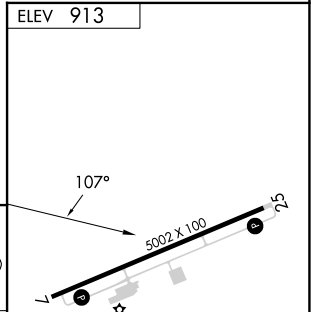
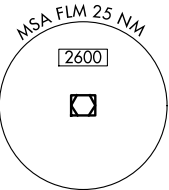
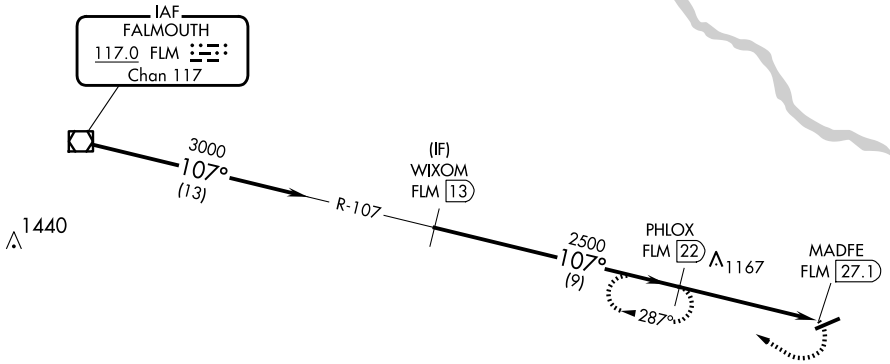
VOR/DME-A
FLEMING-MASON (F'GX)

NA When local altimeter setting not received, use Lexington altimeter setting and increase all MDA 140 feet.

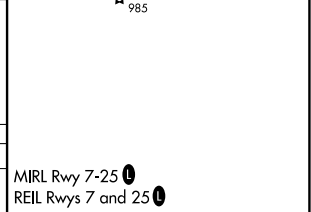
MISSED APPROACH: Climbing right turn to 2500 via heading 340° and FLM VOR/DME R-107 to PHLOX/FLM 22 DME and hold.

AWOS-3 118.125	INDIANAPOLIS CENTER 124.225 360.725	UNICOM 123.0 (CTAF)
--------------------------	---	-------------------------------

Procedure NA for arrivals at FLM VOR/DME via airway radials 094 CW 150.



CATEGORY	A	B	C	D
CIRCLING	1900-1¼ 987 (1000-1¼)	1900-1½ 987 (1000-1½)	1900-3	987 (1000-3)



SE-1, 16 APR 2026 to 14 MAY 2026

SE-1, 16 APR 2026 to 14 MAY 2026