

WAAS CH <b>82335</b> <b>W19A</b>	APP CRS <b>189°</b>	Rwy Ldg TDZE Apt Elev	<b>5000</b> <b>1077</b> <b>1077</b>
--	------------------------	-----------------------------	---

# RNAV (GPS) RWY 19

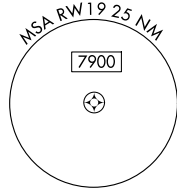
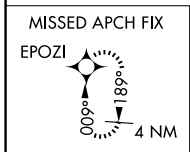
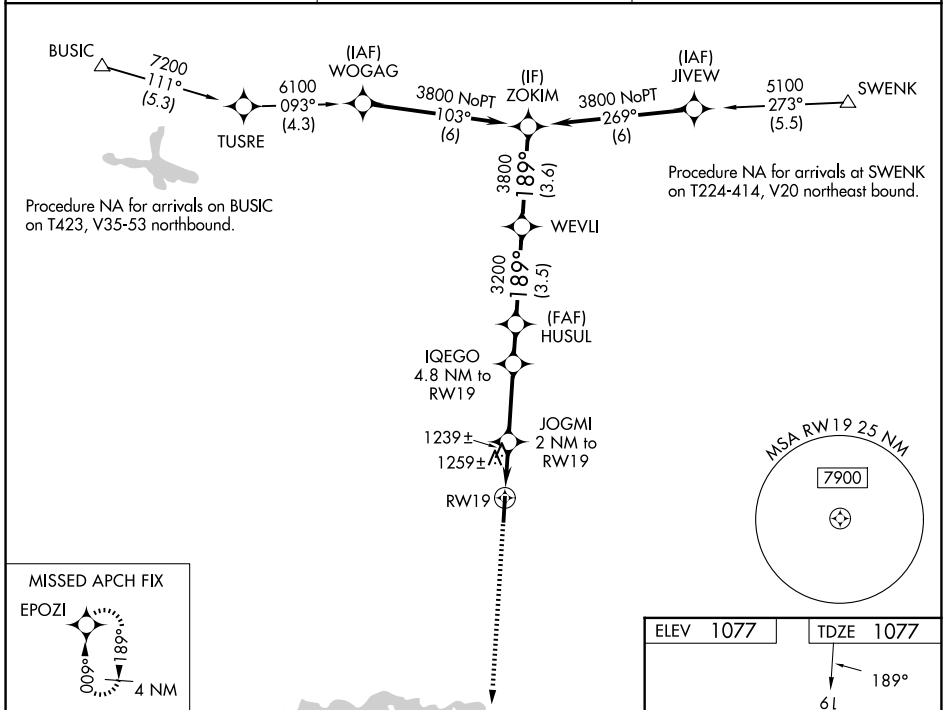
RUTHERFORD COUNTY/MARCHMAN FLD (FQD)

RNP APCH - GPS.

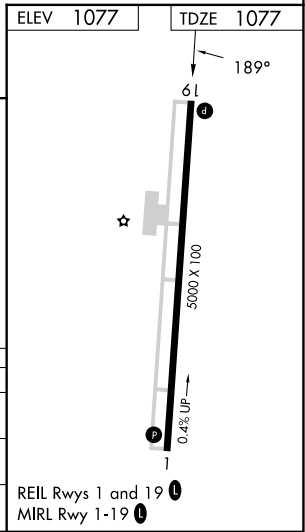
When local altimeter setting not received, use EHO altimeter setting and increase all MDAs 80 feet and LNAV visibility Cat C/D 1/8 SM and LP visibility Cat C/D 1/8 SM, and Circling visibility Cat C/D 1/8 SM. VDP NA when using EHO altimeter setting.

MISSED APPROACH:  
Climb to 3000 direct EPOZI and hold.

AWOS-3 <b>118,275</b>	GREER APP CON * <b>119.4 350.2</b>	UNICOM <b>122.8 (CTAF) 0</b>
--------------------------	---------------------------------------	---------------------------------



3000	EPOZI						
		JOGMI 2 NM to RW19	IQEGO 4.8 NM to RW19	HUSUL	WEVLI	ZOKIM	
		1.1 NM to RW19	2720	3200	3800	3800	
		1780	≤3.15° TCH 40				
		1.1	0.9	2.8 NM	1.4 NM	3.5 NM	3.6 NM
CATEGORY		A	B	C	D		
LP MDA		1500-1	423 (500-1)	1500-1¼	423 (500-1¼)		
LNAV MDA		1520-1	443 (500-1)	1520-1¾	443 (500-1¾)		
CIRCLING		1560-1	1620-1	1660-1½	1820-2½		
		483 (500-1)	543 (600-1)	583 (600-1½)	743 (800-2½)		



SE-2, 16 APR 2026 to 14 MAY 2026

SE-2, 16 APR 2026 to 14 MAY 2026