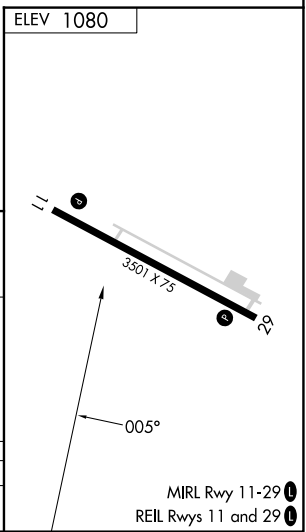
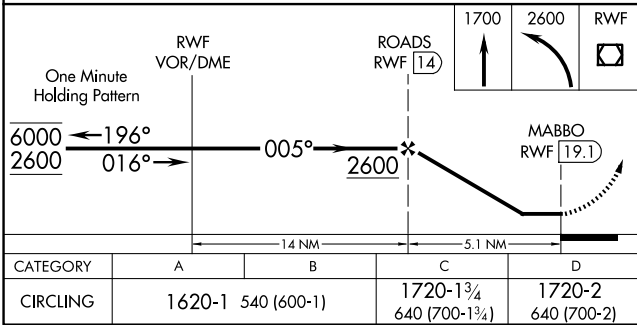
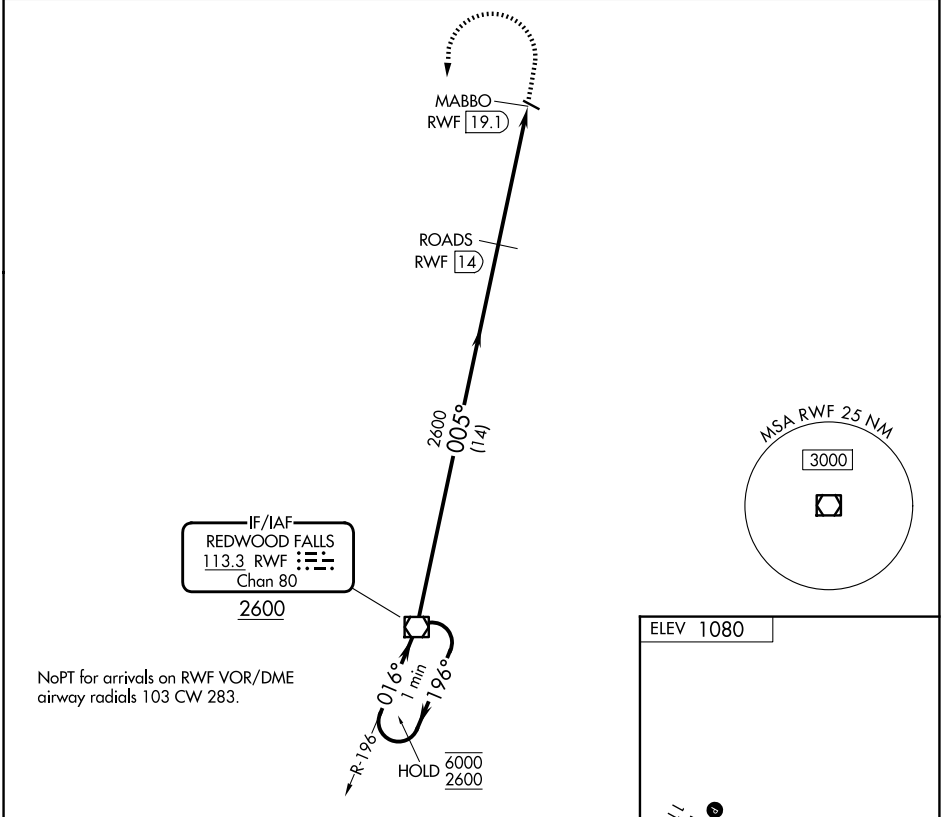


| | | |
|---|------------------------|---|
| VOR/DME RWF 113.3 Chan 80 | APP CRS 005° | Rwy Ldg TDZE Apt Elev N/A N/A 1080 |
|---|------------------------|---|

VOR-A
OLIVIA RGNL (OVL)

| | |
|--|---|
| DME required. | MISSED APPROACH: Climb to 1700 then climbing left turn to 2600 direct RWF VOR/DME and hold. |
| <p>▼ Procedure NA at night. Helicopter visibility reduction below 1 SM NA.</p> <p>▲ When local altimeter setting not received, use RWF altimeter setting and increase all MDA 40 feet and visibility Cat C/D ¼ SM.</p> | |

| | | |
|--------------------------|--|---------------------------------|
| AWOS-3 119.275 | MINNEAPOLIS CENTER 127.1 290.2 | UNICOM 122.8 (CTAF) 0 |
|--------------------------|--|---------------------------------|



NC-1, 16 APR 2026 to 14 MAY 2026

NC-1, 16 APR 2026 to 14 MAY 2026