

WAAS CH 48837 W22A	APP CRS 218°	Rwy Ldg TDZE Apt Elev	5004 2382 2396
--	------------------------	-----------------------------	---

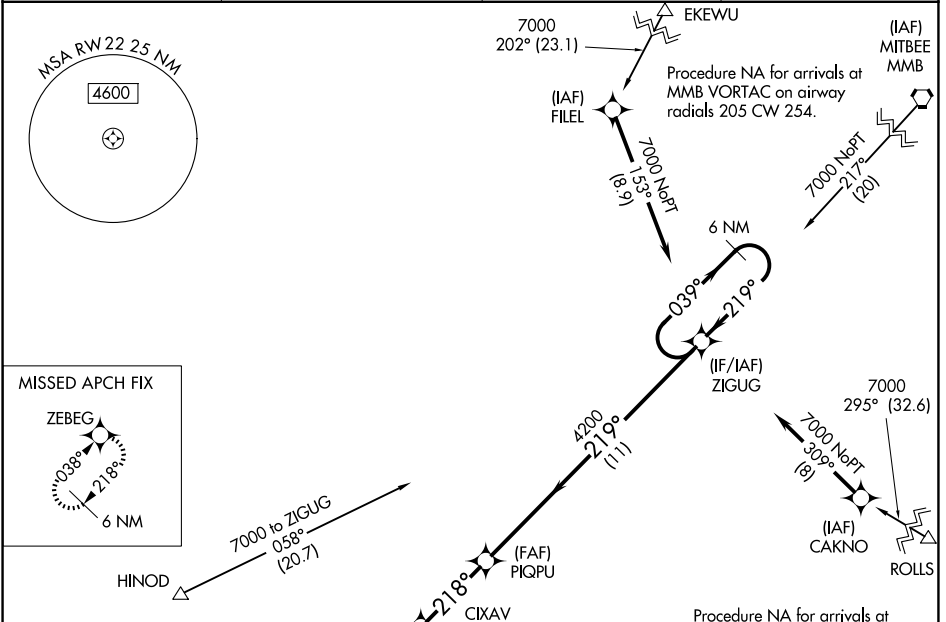
RNAV (GPS) RWY 22

HEMPHILL COUNTY (HHF)

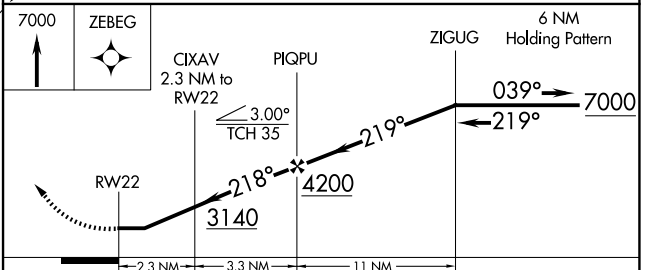
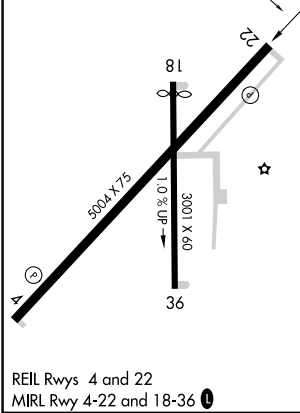
⚠ DME/DME RNP-0.3 NA. When local altimeter setting not received, use Gage altimeter setting and increase all MDA 120 feet, increase LP and LNAV visibility Cat C and D $\frac{3}{8}$ mile and Circling Cat C $\frac{1}{2}$ mile. Helicopter visibility reduction below $\frac{3}{4}$ SM NA. Circling Rwy 18, 36 NA at night.

⚠ MISSED APPROACH: Climb to 7000 direct ZEBEG and hold, continue climb-in-hold to 7000.

AWOS-3PT 119.025	ALBUQUERQUE CENTER 127.85 285.475	KANSAS CITY CENTER 126.95 379.2	CTAF 122.9
----------------------------	---	---	----------------------



ELEV 2396	TDZE 2382
-----------	-----------



CATEGORY	A	B	C	D
LP MDA	2800-1	418 (500-1)	2800-1 $\frac{1}{8}$	418 (500-1 $\frac{1}{8}$)
LNAV MDA	2860-1	478 (500-1)	2860-1 $\frac{1}{8}$	478 (500-1 $\frac{1}{8}$)
CIRCLING	3040-1	644 (700-1)	3280-2 $\frac{3}{4}$ 884 (900-2 $\frac{3}{4}$)	3340-3 944 (1000-3)

SC-2, 16 APR 2026 to 14 MAY 2026

SC-2, 16 APR 2026 to 14 MAY 2026