

RNAV (GPS) RWY 36

SHELBY COUNTY (2H \emptyset)

APP CRS	Rwy Ldg	4098
002°	TDZE	619
	Apt Elev	619

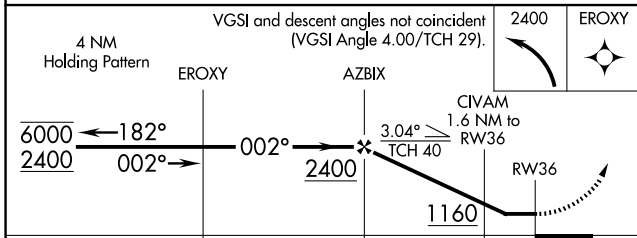
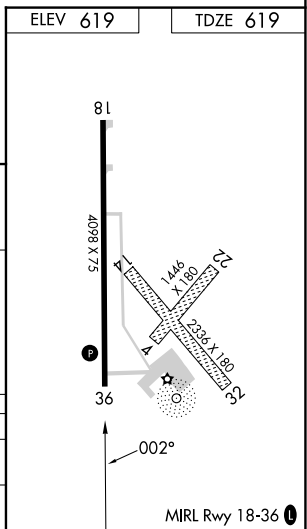
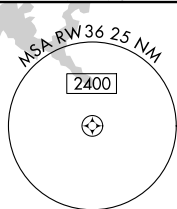
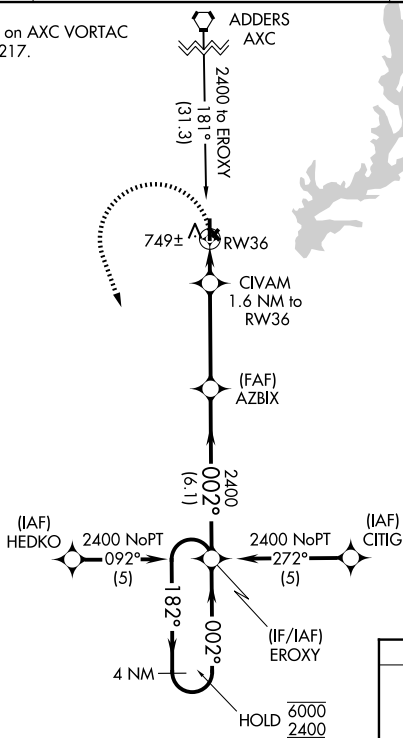
RNP APCH - GPS.

NA Circling NA to Rwys 4, 14, 22, and 32. Use Decatur altimeter setting, when not received use Mattoon/Charleston altimeter setting and increase all MDAs 20 feet, and Circling Cat C visibility ¼ SM. Rwy 36 helicopter visibility reduction below 1 SM NA. Straight-in and Circling Rwy 36 NA at night.

MISSED APPROACH:
Climbing left turn to 2400 direct EROXY and hold.

DEC ASOS 126.35	KANSAS CITY CENTER 124.3 269.15	UNICOM 122.8 (CTAF)
---------------------------	-------------------------------------------	-------------------------------

Procedure NA for arrival on AXC VORTAC airway radials 098 CW 217.



CATEGORY	A	B	C	D
LNVA MDA	1080-1	461 (500-1)	1080-1 $\frac{3}{8}$ 461 (500-1 $\frac{3}{8}$)	NA
CIRCLING	1280-1	661 (700-1)	1340-2 721 (800-2)	NA