

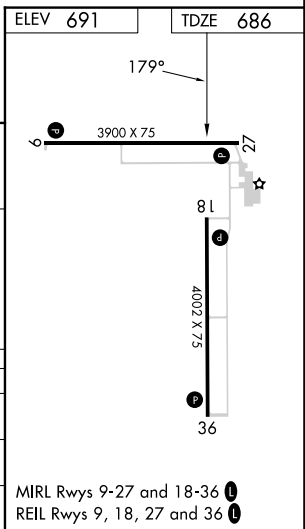
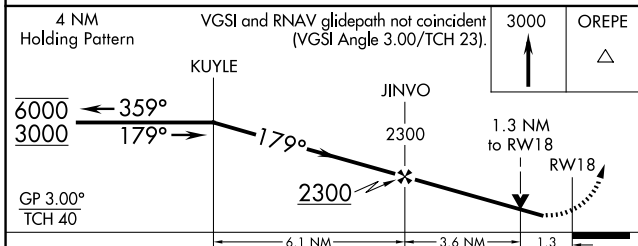
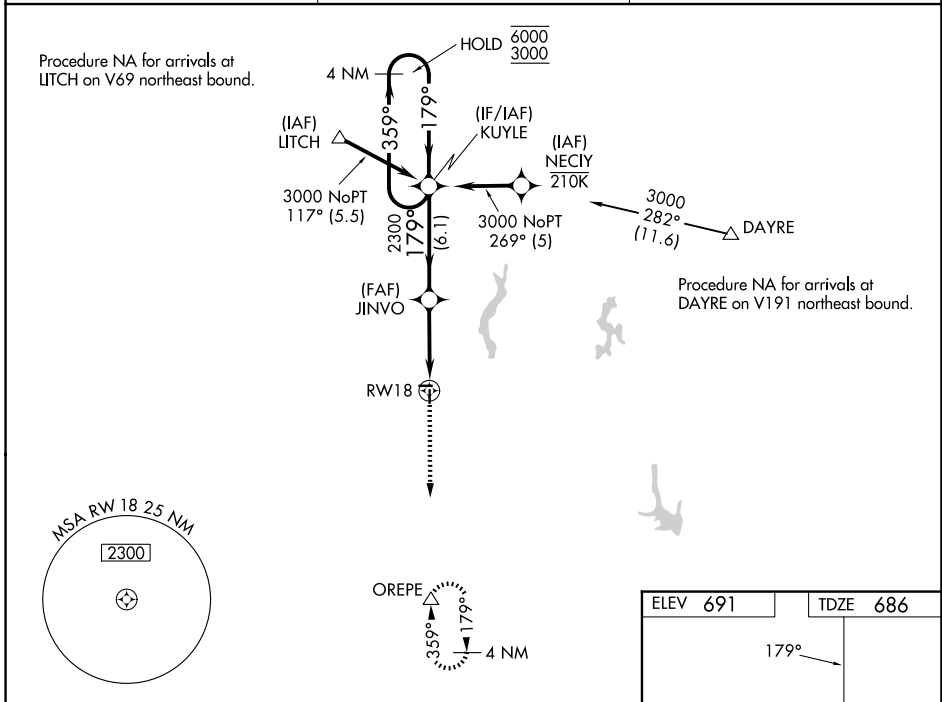
WAAS CH 58203 W18A	APP CRS 179°	Rwy Ldg TDZE 686 Apt Elev 691	4002
--	------------------------	---	-------------

RNAV (GPS) RWY 18

LITCHFIELD MUNI (3LF)

RNP APCH - GPS.	MISSED APPROACH: Climb to 3000 direct OREPE and hold.
<p>⚠ Baro-VNAV and VDP NA when using Taylorville altimeter setting. Rwy 18 helicopter visibility reduction below 3/4 SM NA. For uncompensated Baro-VNAV systems, LNAV/VNAV NA below -16°C or above 54°C. When local altimeter setting not received, use Taylorville altimeter setting and increase LPV DA to 1025 feet and all visibilities 1/8 SM, increase LNAV/VNAV DA to 1146 feet and all visibilities 1/4 SM, increase all MDAs 80 feet and LNAV visibility Cat C 1/8 SM.</p>	

AWOS-3PT 118.175	ST. LOUIS APP CON 124.2 353.9	UNICOM 122.8 (CTAF) 0
----------------------------	---	---------------------------------



CATEGORY	A	B	C	D
LPV DA	952-7/8 266 (300-7/8)			NA
LNAV/VNAV DA	1073-1 387 (400-1 1/8)			NA
LNAV MDA	1120-1 434 (500-1)		1120-1 1/4 434 (500-1 1/4)	

EC-3, 16 APR 2026 to 14 MAY 2026

EC-3, 16 APR 2026 to 14 MAY 2026