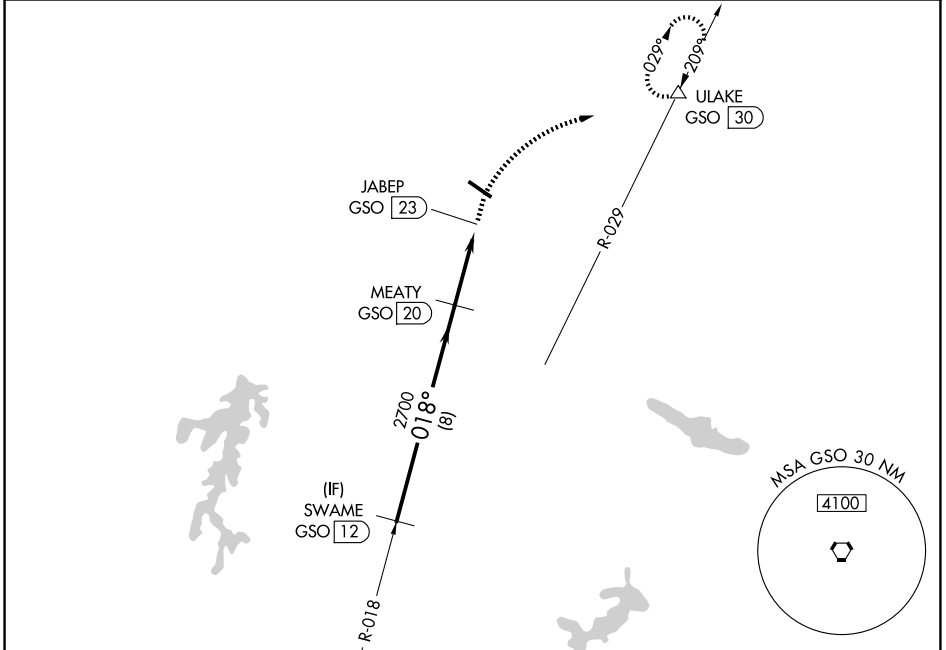


VORTAC GSO 116.2 Chan 109	APP CRS 018°	Rwy Ldg TDZE Apt Elev	N/A N/A 694
---	------------------------	--------------------------	--

VOR-A
ROCKINGHAM COUNTY NC SHILOH (SIF')

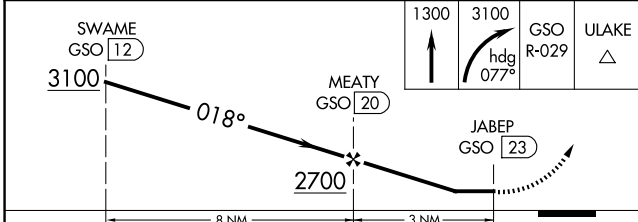
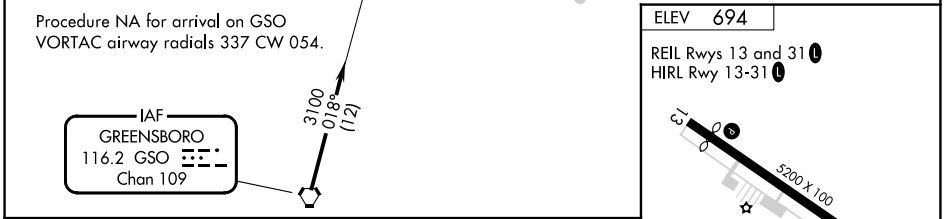
DME required. MISSED APPROACH: Climb to 1300 then climbing right turn to 3100 on heading 077° and GSO VORTAC R-029 to ULAKE/GSO 30 DME and hold, continue climb-in-hold to 3100.

AWOS-3 119.775	GREENSBORO APP CON 124.35 269.225	UNICOM 122.8 (CTAF) ①
--------------------------	---	---------------------------------



SE-2, 16 APR 2026 to 14 MAY 2026

SE-2, 16 APR 2026 to 14 MAY 2026



CATEGORY	A		B		C		D		FAF to MAP 3 NM					
CIRCLING	1280-1½ 586 (600-1½)		1340-1½ 646 (700-1½)		1340-1¾ 646 (700-1¾)		1440-2½ 746 (800-2½)		Knots	60	90	120	150	180
									Min:Sec	3:00	2:00	1:30	1:12	1:00