

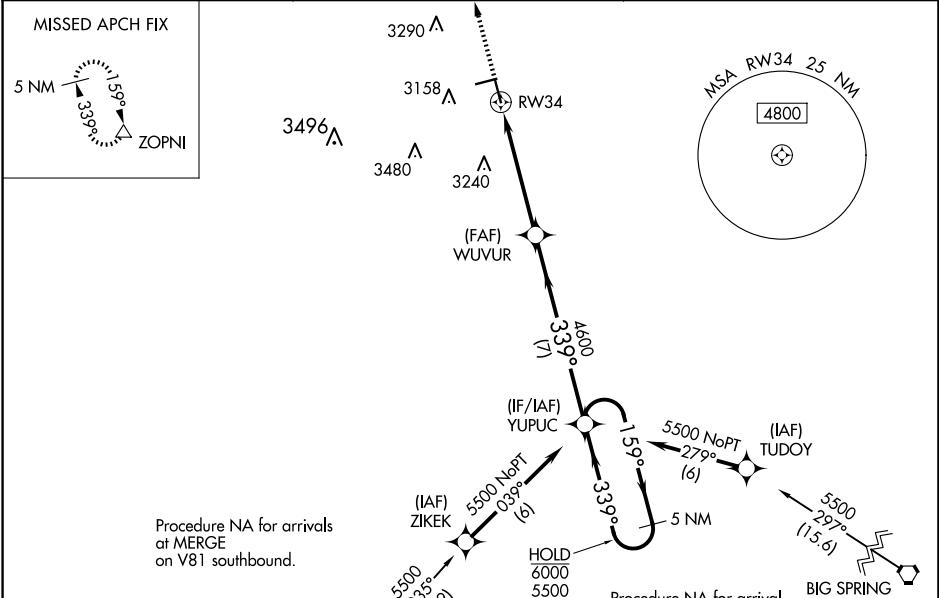
WAAS CH 56626 W34A	APP CRS 339°	Rwy Idg TDZE Apt Elev	5002 2994 2999
--	------------------------	-----------------------------	---

RNAV (GPS) RWY 34

LAMESA MUNI (LUV)

RNP APCH.	MISSED APPROACH: Climb to 5500 direct ZOPNI and hold.
<p>Circling Rwy 7, 25 NA at night. For uncompensated Baro-VNAV systems, LNAV/VNAV NA below -20°C or above 54°C.</p>	

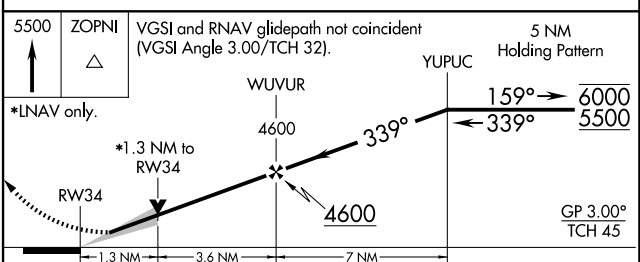
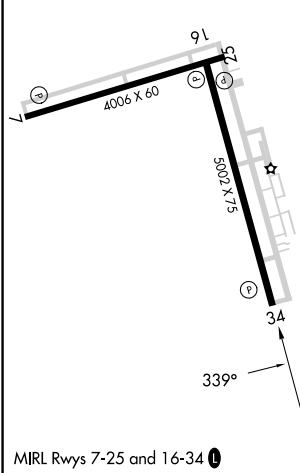
AWOS-3PT 124.175	FORT WORTH CENTER 132.6 269.05	UNICOM 122.8 (CTAF) 0
----------------------------	--	---------------------------------



Procedure NA for arrivals at MERGE on V81 southbound.

Procedure NA for arrival on BGS VORTAC airway radials 227 CW 334.

ELEV 2999	TDZE 2994
-----------	-----------



CATEGORY	A	B	C	D
LPV DA	3194- ³ / ₄		200 (200- ³ / ₄)	
LNAV/VNAV DA	3244- ³ / ₄		250 (300- ³ / ₄)	
LNAV MDA	3420-1	426 (500-1)	3420-1 ¹ / ₄	426 (500-1 ¹ / ₄)
CIRCLING	3460-1	461 (500-1)	3700-2 701 (800-2)	3840-2 ³ / ₄ 841 (900-2 ³ / ₄)

SC-2, 16 APR 2026 to 14 MAY 2026

SC-2, 16 APR 2026 to 14 MAY 2026