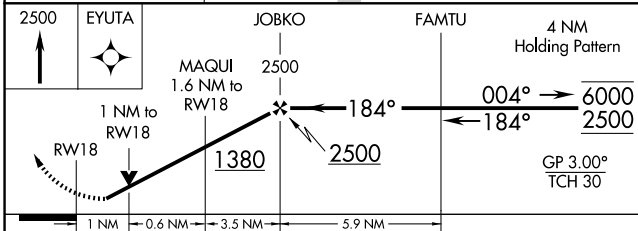
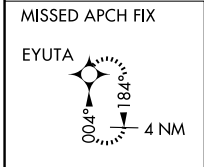
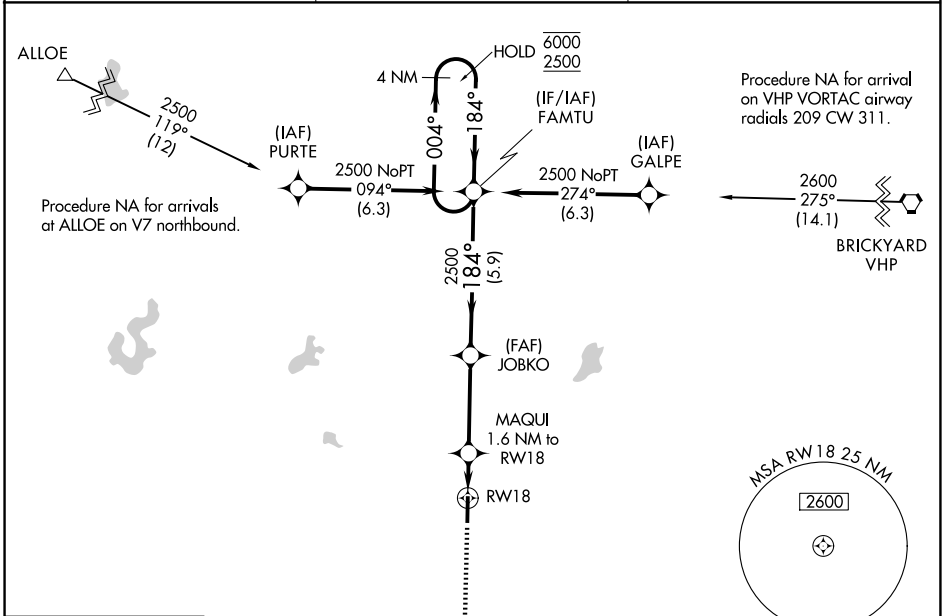


WAAS CH 86906 W18A	APP CRS 184°	Rwy Ldg 5002 TDZE 842 Apt Elev 842
--	------------------------	---

RNAV (GPS) RWY 18

PUTNAM COUNTY RGNL (GPC)

RNP APCH - GPS.		MISSED APPROACH: Climb to 2500 direct EYUTA and hold.
AWOS-3PT 118.125	INDIANAPOLIS APP CON 119.05 317.8	UNICOM 122.8 (CTAF) ①



ELEV 842	TDZE 842
MIRL Rwy 18-36 ①	
REIL Rwy 18	

CATEGORY	A	B	C	D
LPV DA		1107-7/8	265 (300-7/8)	
LNAV/VNAV DA		1124-7/8	282 (300-7/8)	
LNAV MDA		1200-1	358 (400-1)	
CIRCLING	1280-1 438 (500-1)	1400-1 558 (600-1)	1480-1 3/4 638 (700-1 3/4)	1600-2 1/2 758 (800-2 1/2)

EC-2, 16 APR 2026 to 14 MAY 2026

EC-2, 16 APR 2026 to 14 MAY 2026