

APP CRS	Rwy Idg 4400
213°	TDZE 467
	Apt Elev 467

RNAV (GPS) RWY 21

RIPLEY (25M)

RNP APCH.

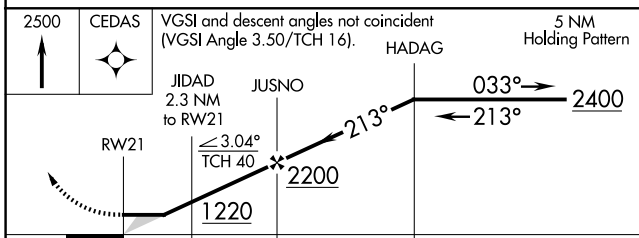
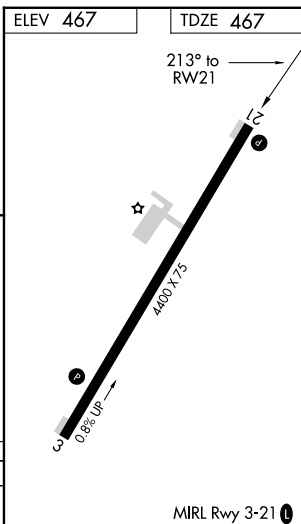
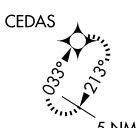
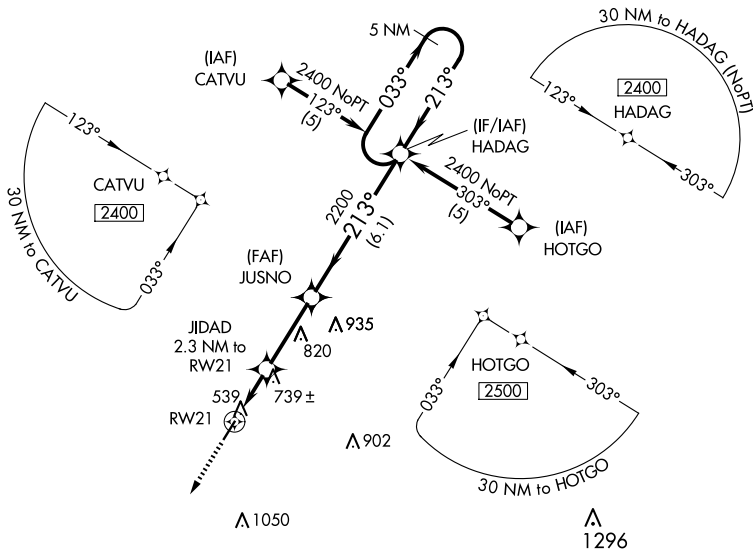
▼ Use Corinth altimeter setting; when not received, use Tupelo altimeter setting and increase all MDA 40 feet, and increase LNAV Cat C visibility 1/4 mile.
 ▲ NA Procedure NA at night. Rwy 21 helicopter visibility reduction below 1 SM NA.

MISSED APPROACH: Climb to 2500 direct CEDAS and hold.

CRX AWOS-3PT
118.675

MEMPHIS CENTER
135.9 260.6

UNICOM
122.8 (CTAF) 0



CATEGORY	A	B	C	D
LNAV MDA	1060-1	593 (600-1)	1060-1½ 593 (600-1½)	NA

SC-4, 16 APR 2026 to 14 MAY 2026

SC-4, 16 APR 2026 to 14 MAY 2026