

RIPLEY, MISSISSIPPI

AL-6339 (FAA)

21252

VORTAC HLI 112.4 Chan 71	APP CRS 094°	Rwy Idg TDZE Apt Elev 467	N/A N/A
--	------------------------	---	--------------------------

VOR/DME-A

RIPLEY (25M)

▼ Use Corinth altimeter setting; when not received, use Tupelo altimeter setting and increase all MDAs 40 feet, and visibility Cat C ¼ SM.
▲ NA Procedure NA at night. Helicopter visibility reduction below 1 SM NA.

MISSED APPROACH: Climbing left turn to 3000 via heading 251° and HLI VORTAC R-094 to HLI VORTAC and hold.

CRX AWOS-3PT 118.675	MEMPHIS CENTER 135.9 260.6	UNICOM 122.8 (CTAF) ①
--------------------------------	--------------------------------------	---------------------------------

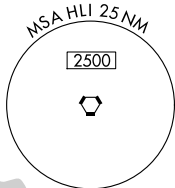
Procedure NA for arrivals on HLI VORTAC
 airway radials 045 CW 112.

IAF
 HOLLY SPRINGS
 112.4 HLI [112.4]
 Chan 71

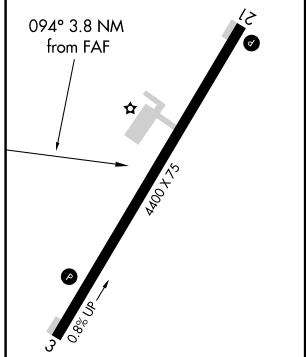
(IF)
 TIRED
 HLI [10]

NUTTE
 HLI [20]

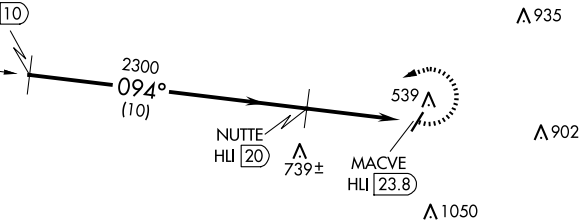
MACVE
 HLI [23.8]



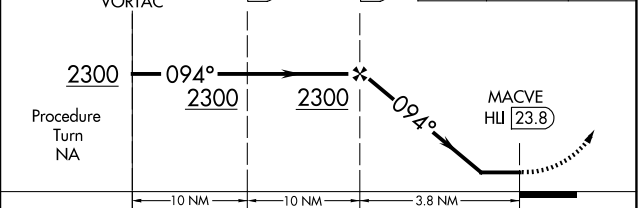
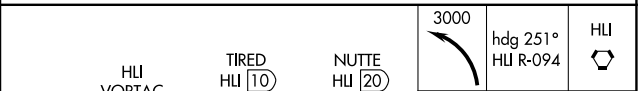
ELEV 467



MIRL Rwy 3-21 ①



1126
 ▲



CATEGORY	A	B	C	D
CIRCLING	1060-1 593 (600-1)	1100-1¼ 633 (700-1¼)	1120-1¾ 653 (700-1¾)	1420-3 953 (1000-3)

RIPLEY, MISSISSIPPI
 Amdt 2B 09SEP21

34°43'N-89°01'W

RIPLEY (25M) VOR/DME-A

SC-4, 16 APR 2026 to 14 MAY 2026

SC-4, 16 APR 2026 to 14 MAY 2026