

RNAV (GPS) RWY 18

APCH CRS	Rwy Idg	6142
161°	TDZE	410
	Arprt Elev	433

[USA]

LAGUNA AAF (YUMA PROVING GROUND) (KLGf)

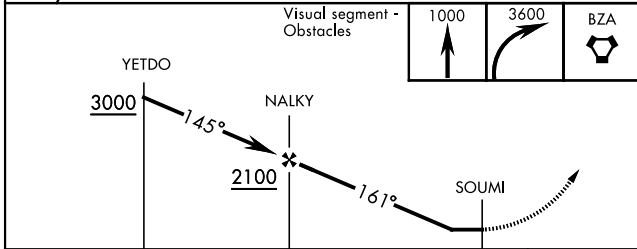
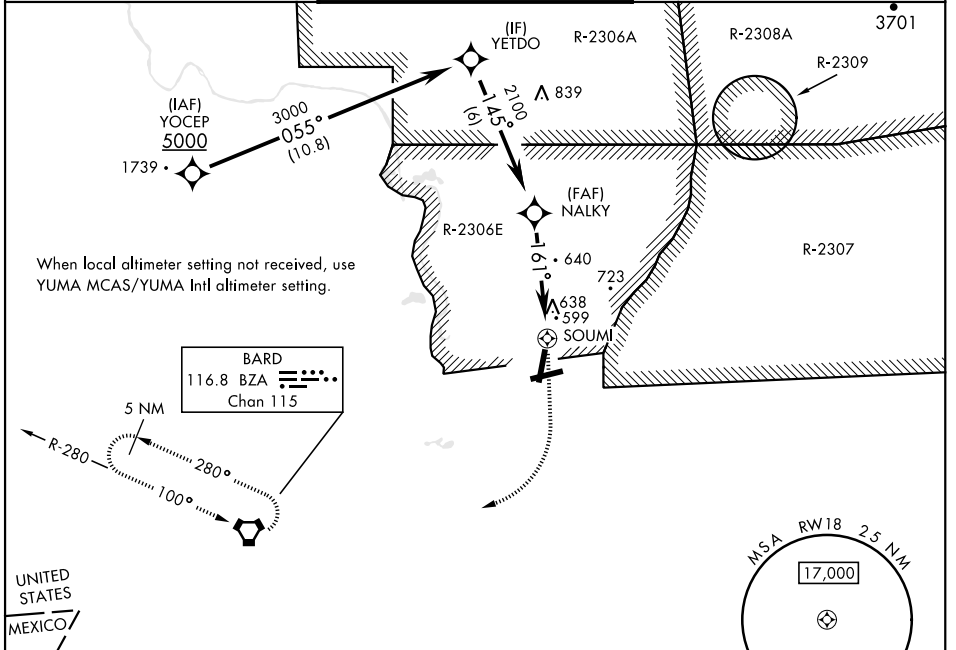
RNP APCH - GPS

RADAR required for holding.

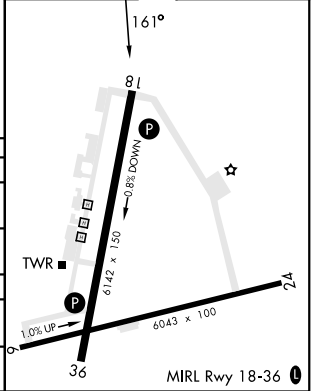
- ▼ Procedure not authorized when airfield closed.
- * Circling to Rwy 24 not authorized at night.
- ▲ NA Circling not authorized NW of Rwy 6 and 18.

MISSED APPROACH: Climb to 1000, then climbing right turn to 3600 direct BZA VORTAC and hold, continue climbing in hold to 3600.

YUMA APP CON 124.7 371.975	TOWER ★ 126.2 (CTAF) 242.175	GND CON 121.8 229.4
--------------------------------------	--	-------------------------------



ELEV	433	TDZE	410
------	-----	------	-----



CATEGORY	A		B		C		D	
LNAV MDA	900-1	490 (500-1)	900-1 $\frac{3}{8}$	490 (500-1 $\frac{3}{8}$)				
CIRCLING *	900-1	940-1	940-1 $\frac{1}{2}$	507 (600-1)	507 (600-1 $\frac{1}{2}$)	1040-2	607 (700-2)	
YUMA MCAS/YUMA Intl ALTIMETER SETTING								
LNAV MDA	980-1	570 (600-1)	980-1 $\frac{5}{8}$	570 (600-1 $\frac{5}{8}$)				
CIRCLING *	980-1	1020-1	1020-1 $\frac{5}{8}$	587 (600-1)	587 (600-1 $\frac{5}{8}$)	1120-2 $\frac{1}{4}$	687 (700-2 $\frac{1}{4}$)	

RNAV (GPS) RWY 18

SW-4, 16 APR 2026 to 14 MAY 2026

SW-4, 16 APR 2026 to 14 MAY 2026