

YUMA, ARIZONA

# RNAV (GPS) RWY 6

APCH CRS	Rwy Idg	6043
063°	TDZE	387
	Arprt Elev	433

[USA]

LAGUNA AAF (YUMA PROVING GROUND) (KLGf)

RNP APCH - GPS

RADAR required for holding.

▼ Procedure not authorized when airfield closed.  
 \* Straight-in Minimums not authorized at night.  
 \*\* Circling not authorized NW of Rwys 6 and 18.  
 Circling to Rwy 24 not authorized at night.

MISSED APPROACH: Climbing right turn to 3600 direct BZA VORTAC and hold.

▲ NA

YUMA APP CON  
124.7 371.975

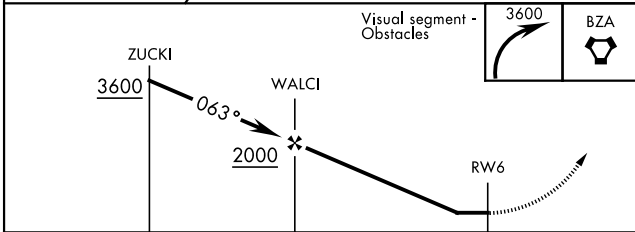
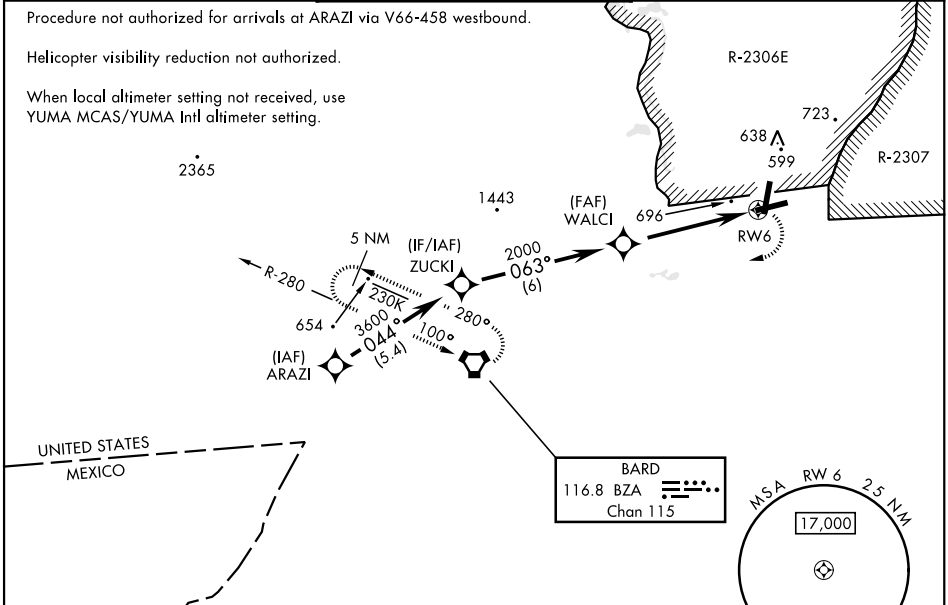
TOWER ★  
126.2 (CTAF) 242.175

GND CON  
121.8 0 229.4

Procedure not authorized for arrivals at ARAZI via V66-458 westbound.

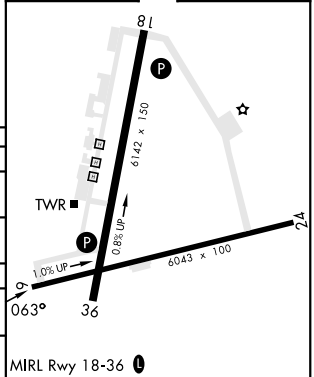
Helicopter visibility reduction not authorized.

When local altimeter setting not received, use YUMA MCAS/YUMA Intl altimeter setting.



ELEV 433 | TDZE 387

CATEGORY	A	B	C	D
RNAV MDA*	1020-1 633 (600-1)	1020-1¾ 633 (600-1¾)		
CIRCLING**	1080-1 647 (700-1)	1080-1¾ 647 (700-1¾)	1080-2 647 (700-2)	
YUMA MCAS/YUMA Intl ALTIMETER SETTING				
RNAV MDA*	1100-1 713 (700-1)	1100-2 713 (700-2)		
CIRCLING**	1160-1 727 (800-1)	1160-2 727 (800-2)	1160-2½ 727 (800-2½)	



YUMA, ARIZONA  
Amdt 1 05OCT23

32°52'N-114°24'W

LAGUNA AAF (YUMA PROVING GROUND) (KLGf)

# RNAV (GPS) RWY 6

SW-4, 16 APR 2026 to 14 MAY 2026

SW-4, 16 APR 2026 to 14 MAY 2026