

YUMA, ARIZONA

VOR RWY 6

VORTAC BZA 116.8 Chan 115	APCH CRS 048°	Rwy Idg TDZE Arprt Elev 6043 387 433	[USA] LAGUNA AAF (YUMA PROVING GROUND) (KLGf)
---	-------------------------	--	---

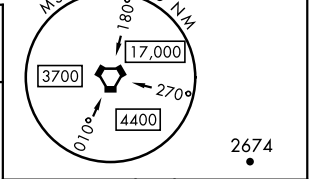
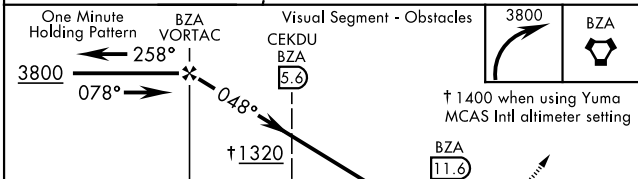
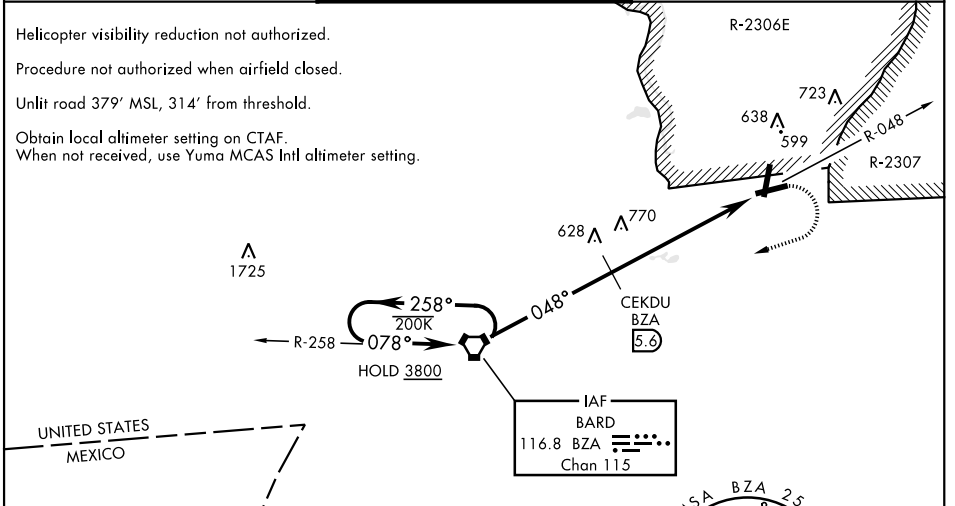
RADAR required for holding.

MISSED APPROACH: Climbing right turn to 3800 direct BZA VORTAC and hold, continue climb-in-hold to 3800.

Procedure not authorized at night.

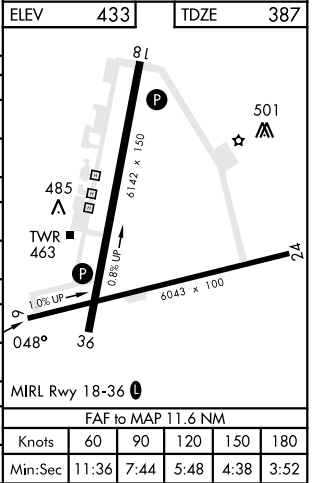
NA ** Circling not authorized NW of runways 06 and 18.

YUMA APP CON 124.7 371.975	TOWER ★ 126.2 (CTAF) 242.175	GND CON 121.8 229.4
--------------------------------------	--	-------------------------------



ELEV	433	TDZE	387
------	-----	------	-----

CATEGORY	A	B	C	D
S-6*	1320-1¼ 933 (900-1¼)	1320-2½ 933 (900-2½)		
CIRCLING**	1320-1¼ 887 (900-1¼)	1320-2¾ 887 (900-2¾)	1320-3 887 (900-3)	
DME MINIMA				
S-6*	1040-1 653 (700-1)	1040-1⅞ 653 (700-1⅞)		
CIRCLING**	1080-1 647 (700-1)	1080-1⅞ 647 (700-1⅞)	1080-2 647 (700-2)	
YUMA MCAS/YUMA Intl ALTIMETER SETTING				
S-6*	1400-1¼ 1013 (1000-1¼)	1400-1½ 1013 (1000-1½)	1400-3 1013 (1000-3)	
CIRCLING**	1400-1¼ 967 (1000-1¼)	1400-1½ 967 (1000-1½)	1400-3 967 (1000-3)	
YUMA MCAS/YUMA Intl ALTIMETER SETTING DME MINIMA				
S-6*	1120-1 733 (700-1)	1120-2 733 (700-2)		
CIRCLING**	1160-1 727 (800-1)	1160-2 727 (800-2)	1160-2¼ 727 (800-2¼)	



YUMA, ARIZONA 32°52'N-114°24'W LAGUNA AAF (YUMA PROVING GROUND) (KLGf)

VOR RWY 6

SW-4, 16 APR 2026 to 14 MAY 2026

SW-4, 16 APR 2026 to 14 MAY 2026