

WAAS CH 60935 W18A	APP CRS 177°	Rwy Idg TDZE Apt Elev	3998 415 415
--	------------------------	-----------------------------	---

RNAV (GPS) RWY 18

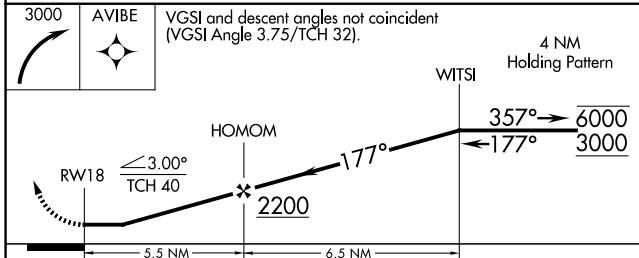
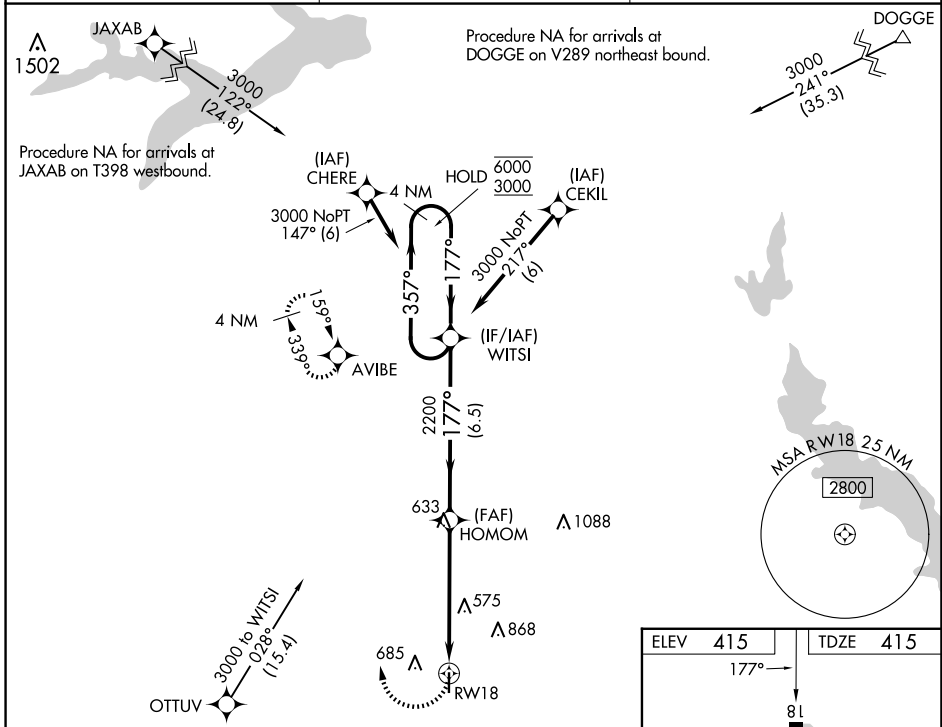
FOX STEPHENS FLD/GILMER MUNI (JXI)

RNP APCH - GPS.

▼ Procedure NA at night. Rwy 18 helicopter visibility reduction below 1 SM NA. When local altimeter setting not received, use Longview altimeter setting and increase all MDA 60 feet and increase LP, LNAV, and Circling Cat C visibility 1/4 SM.

▲ MISSED APPROACH: Climb right turn to 3000 direct AVIBE and hold.

AWOS-3PT 120.250	LONGVIEW APP CON ★ 124.275 257.975	CTAF 122.9
----------------------------	--	----------------------



ELEV 415	TDZE 415
177° →	
81	
3998 X 60	
36	

MRL Rwy 18-36

CATEGORY	A	B	C	D
LP MDA	820-1	405 (500-1)	820-1 ¹ / ₈ 405 (500-1 ¹ / ₈)	NA
LNAV MDA	880-1	465 (500-1)	880-1 ³ / ₈ 465 (500-1 ³ / ₈)	NA
Ⓢ CIRCLING	1000-1 585 (600-1)	1060-1 645 (700-1)	1180-2 ¹ / ₄ 765 (800-2 ¹ / ₄)	NA

SC-2, 16 APR 2026 to 14 MAY 2026

SC-2, 16 APR 2026 to 14 MAY 2026