

WAAS CH <b>70502</b> <b>W11A</b>	APP CRS <b>112°</b>	Rwy Ldg TDZE <b>142</b> Apt Elev <b>142</b>	<b>5350</b>
--	------------------------	---	-------------

# RNAV (GPS) RWY 11

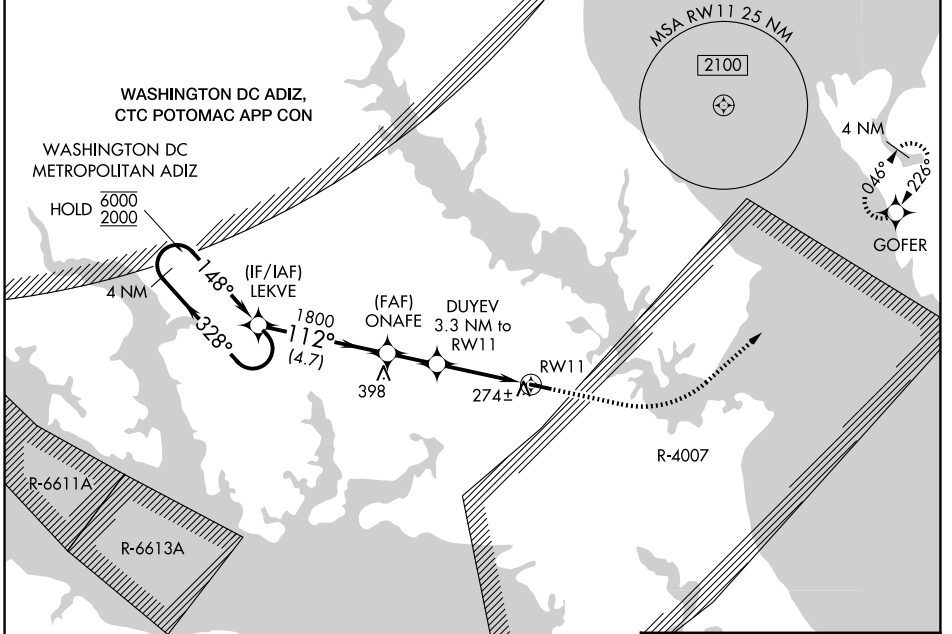
ST MARY'S COUNTY RGNL (2W6)

RNP APCH - GPS.

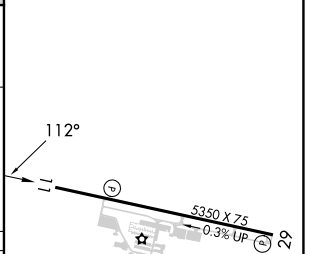
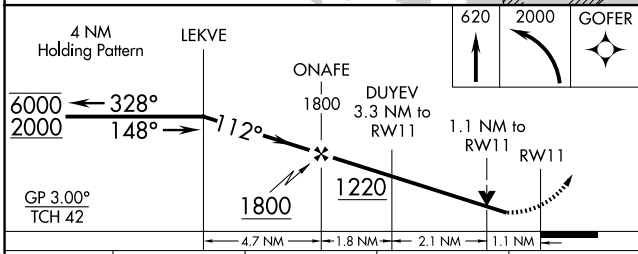
**⚠** Circling Rwy 29 NA at night. Rwy 11 helicopter visibility reduction below 3/4 SM NA.  
**⚠** NA For uncompensated Baro-VNAV systems, LNAV/VNAV NA below -15°C or above 54°C.

MISSED APPROACH: Climb to 620 then climbing left turn to 2000 direct GOFER and hold.

AWOS-3 <b>119.575</b>	PATUXENT APP CON ★ <b>121.0 250.3</b>	UNICOM <b>123.0 (CTAF) 0</b>
--------------------------	--	---------------------------------



ELEV 142	TDZE 142
----------	----------



CATEGORY	A	B	C	D
LPV DA		419-1	277 (300-1)	
LNAV/VNAV DA		503-1	361 (400-1)	
LNAV MDA	540-1	398 (400-1)	540-1 1/8	398 (400-1 1/8)
CIRCLING	660-1	518 (600-1)	840-2 698 (700-2)	840-2 1/4 698 (700-2 1/4)

REIL Rwy 11 and 29 **0**  
 MIRL Rwy 11-29 **0**

NE-3, 16 APR 2026 to 14 MAY 2026

NE-3, 16 APR 2026 to 14 MAY 2026