

WAAS CH 56527 W06A	APP CRS 059°	Rwy Ldg 4999 TDZE 420 Apt Elev 428
--	------------------------	---

RNAV (GPS) RWY 6

MUHLENBERG COUNTY (M21)

RNP APCH - GPS.

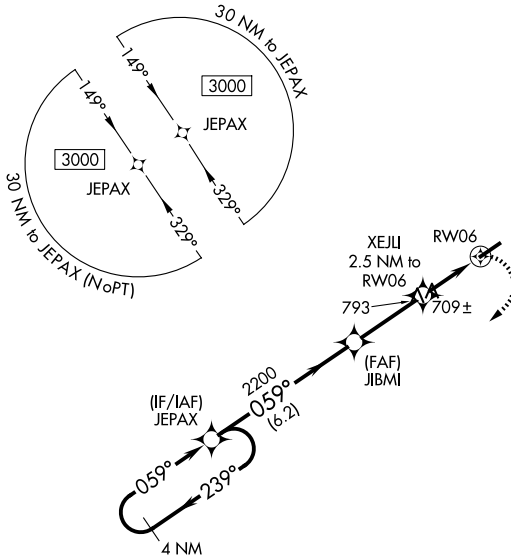
▼ When local altimeter setting not received, use Owensboro altimeter setting and increase all MDAs 80 feet and LP visibility Cat C/D ¼, LNAV visibility Cat B/C/D ¼, and Circling visibility Cat B/C/D ¼. Rwy 6, helicopter visibility reduction below ¾ SM NA. Circling Rwy 24 NA at night.

MISSED APPROACH:
Climbing right turn to 3000 direct JEPAX and hold.

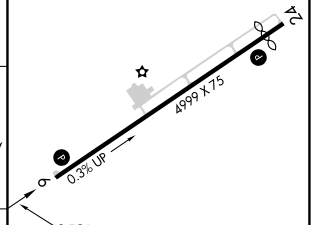
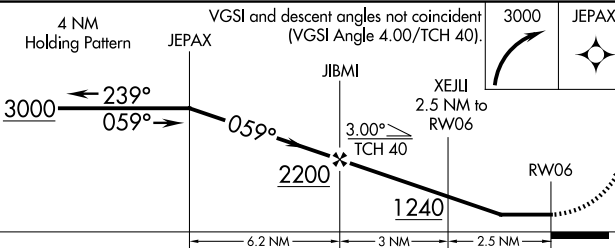
AWOS-3
120.45

CAMPBELL APP CON ★
118.1 269.525

UNICOM
123.0 (CTAF) ①



ELEV 428 **D** TDZE 420



CATEGORY	A	B	C	D
LP MDA	960-1	540 (600-1)	960-1½	540 (600-1½)
LNAV MDA	1100-1	680 (700-1)	1100-1⅞	680 (700-1⅞)
CIRCLING	1100-1	672 (700-1)	1180-2¼ 752 (800-2¼)	1200-2½ 772 (800-2½)

MIRL Rwy 6-24 ①
REIL Rws 6 and 24 ①

SE-1, 16 APR 2026 to 14 MAY 2026

SE-1, 16 APR 2026 to 14 MAY 2026