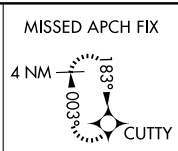
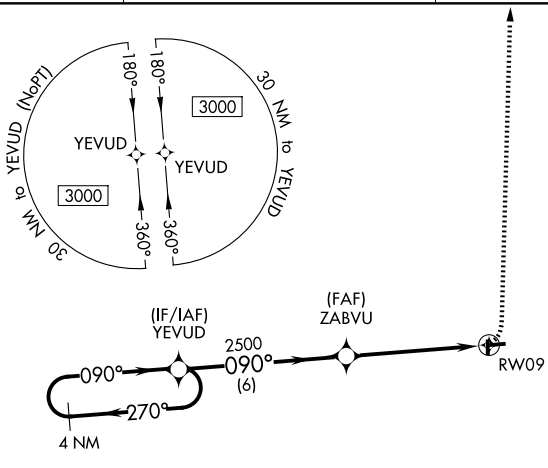


WAAS CH <b>58334</b> <b>W09A</b>	APP CRS <b>090°</b>	Rwy Ldg <b>3200</b> TDZE <b>841</b> Apt Elev <b>841</b>
--	------------------------	---

# RNAV (GPS) RWY 9

ABRAMS MUNI (4D0)

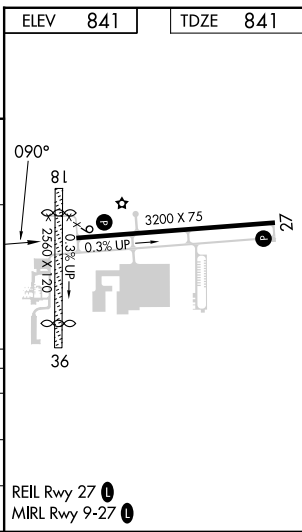
<p><b>⚠</b> NA</p> <p>Use Lansing altimeter setting. DME/DME RNP-0.3 NA. Circling NA to Rwy 18 and 36. Helicopter visibility reduction below <math>\frac{3}{4}</math> SM NA. Night Landing Rwy 27 NA.</p>	<p>MISSED APPROACH: Climbing left turn 3000 direct CUTTY and hold.</p>	
<p>LAN ASOS <b>119.75</b></p>	<p>GREAT LAKES APP CON ★ <b>118.65 226.4</b></p>	<p>UNICOM <b>122.7 (CTAF) 0</b></p>



EC-1, 16 APR 2026 to 14 MAY 2026

EC-1, 16 APR 2026 to 14 MAY 2026

ELEV 841		TDZE 841	
4 NM Holding Pattern		Visual Segment - Obstacles.	
3000 ← 270°		3000 CUTTY	
090° →		ZABVU	
090°		RWY 9	
6 NM		5.1 NM	
CATEGORY	A	B	C
LP MDA	1380-1	539 (600-1)	NA
LNAV MDA	1400-1	559 (600-1)	NA
CIRCLING	1400-1 559 (600-1)	1420-1 579 (600-1)	NA



REIL Rwy 27 0  
MIRL Rwy 9-27 0