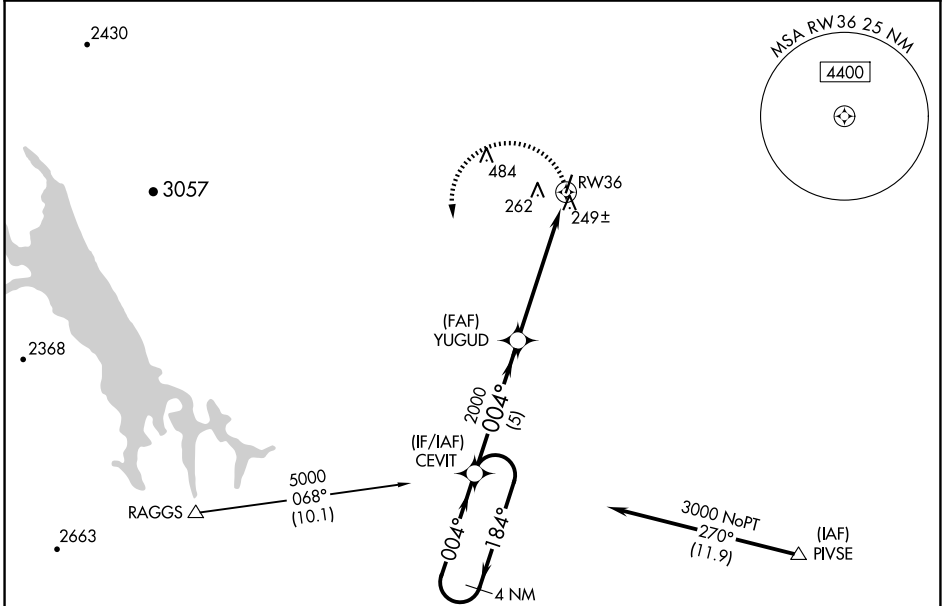


APP CRS	Rwy Idg	3244
004°	TDZE	125
	Apt Elev	125

RNAV (GPS) RWY 36

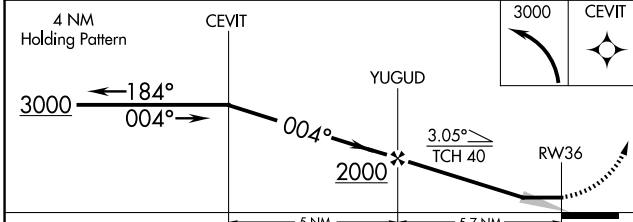
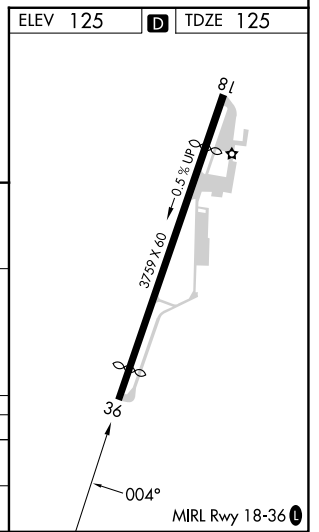
WATTS-WOODLAND (O41)

<p>NA Procedure NA at night. Use Sacramento Infil altimeter setting; when not received, use Sacramento Exec altimeter setting and increase all MDA 20 feet.</p>	<p>MISSED APPROACH: Climbing left turn to 3000 direct CEVIT and hold.</p>
<p>TRAVIS APP CON 126.6 281.45</p>	<p>UNICOM 122.8 (CTAF)</p>



SW-2, 16 APR 2026 to 14 MAY 2026

SW-2, 16 APR 2026 to 14 MAY 2026



CATEGORY	A	B	C	D
RNAV MDA	560-1	435 (500-1)		NA
CIRCLING	620-1	495 (500-1)		NA