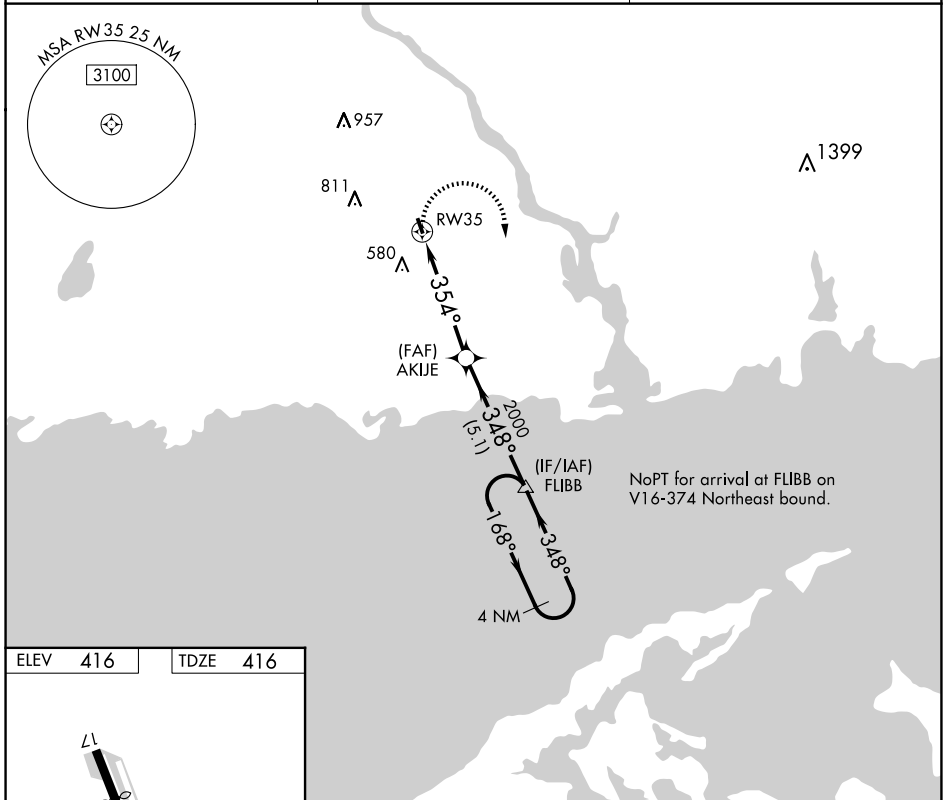


APP CRS 354°	Rwy Idg 2722
	TDZE 416
	Apt Elev 416

RNAV (GPS) RWY 35

CHESTER (SNC)

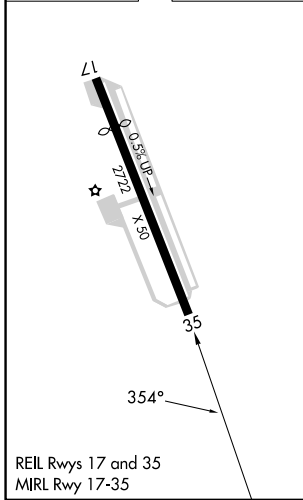
<p>⚠ DME/DME RNP-0.3 NA. Procedure NA at night. Helicopter visibility reduction below 1 SM NA. When local altimeter setting not received, use Meriden altimeter setting and increase all MDA 100 feet.</p>	<p>MISSED APPROACH: Climbing right turn to 2100 direct FLIBB and hold.</p>
<p>AWOS-3 118.325</p>	<p>NEW YORK APP CON 124.075 343.65</p>
<p>UNICOM 122.725 (CTAF)</p>	



NE-1, 16 APR 2026 to 14 MAY 2026

NE-1, 16 APR 2026 to 14 MAY 2026

ELEV 416	TDZE 416
----------	----------



2100	FLIBB	4 NM Holding Pattern		
CATEGORY	A	B	C	D
LNAV MDA	820-1	404 (500-1)	NA	
CIRCLING	920-1 504 (600-1)	1020-1 604 (700-1)	NA	