

WAAS CH <b>86847</b> <b>W35A</b>	APP CRS <b>347°</b>	Rwy Ldg <b>4005</b> TDZE <b>442</b> Apt Elev <b>442</b>
--	------------------------	---

# RNAV (GPS) RWY 35

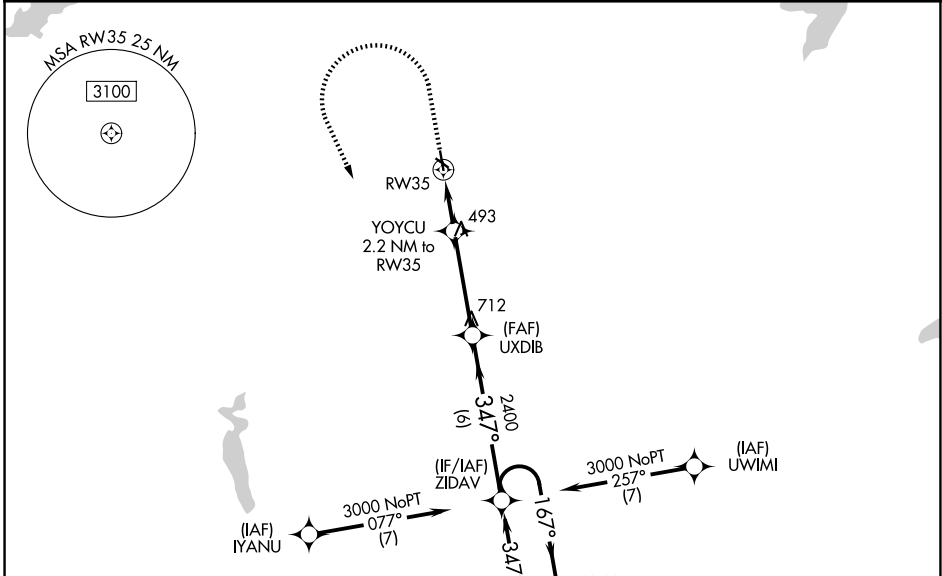
RUSK COUNTY (R.F.I)

RNP APCH - GPS.

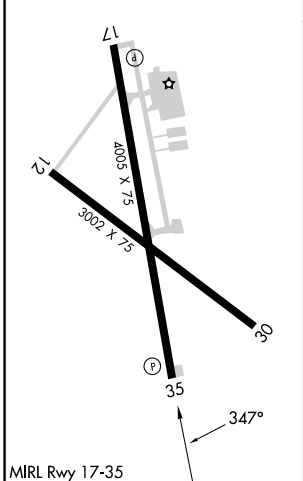
**⚠** Baro-VNAV and VDP NA when using GGG altimeter setting. For uncompensated Baro-VNAV systems, LNAV/VNAV NA below -15°C or above 54°C. Rwy 35 helicopter visibility reduction below ¾ SM NA. Circling Rwy 12, 17 and 30 NA at night. When local altimeter setting not received, use GGG altimeter setting and increase LPV DA to 740 feet; increase LNAV/VNAV DA to 904 feet and all visibilities ¼ SM. Increase all MDAs 60 feet and LNAV visibility Cat C ¼ SM, and Circling visibility Cat C ¼ SM.

**MISSED APPROACH:** Climb to 900 then climbing left turn to 3000 direct ZIDAV and hold.

AWOS-3 <b>119.375</b>	LONGVIEW APP CON ★ <b>124.275 257.975</b>	UNICOM <b>122.8 (CTAF)</b>
--------------------------	--	-------------------------------



ELEV <b>442</b>	TDZE <b>442</b>
-----------------	-----------------



900	3000	ZIDAV	4 NM Holding Pattern
↑	↶	✧	
RW35 1.1 NM to RW35 1.1 NM to RW35		YOYCU 2.2 NM to RW35	UXDIB 2400 167° → 6000 ← 347° 3000
1180		2400	GP 3.00° TCH 40
1.1 NM		3.8 NM	6 NM
CATEGORY	A	B	C
LPV DA	692-1 250 (300-1)		NA
LNAV/VNAV DA	856-1 ¼ 414 (500-1 ½)		NA
LNAV MDA	840-1	398 (400-1)	840-1 ¼ 398 (400-1 ½) NA
CIRCLING	920-1 478 (500-1)	960-1 518 (600-1)	1200-2 ¼ 758 (800-2 ¼) NA

SC-2, 16 APR 2026 to 14 MAY 2026

SC-2, 16 APR 2026 to 14 MAY 2026